

For Research Use Only

# SORLA Monoclonal antibody

Catalog Number: 68651-1-Ig



## Basic Information

<b>Catalog Number:</b> 68651-1-Ig	<b>GenBank Accession Number:</b> BC137171	<b>Purification Method:</b> Protein G purification
<b>Size:</b> 150ul , Concentration: 1000 ug/ml by Nanodrop;	<b>GeneID (NCBI):</b> 6653	<b>CloneNo.:</b> 2E7D9
<b>Source:</b> Mouse	<b>UNIPROT ID:</b> Q92673	<b>Recommended Dilutions:</b> WB 1:1000-1:4000 IF-P 1:200-1:800
<b>Isotype:</b> IgG1	<b>Full Name:</b> sortilin-related receptor, L(DLR class) A repeats-containing	
<b>Immunogen Catalog Number:</b> AG18445	<b>Calculated MW:</b> 2214 aa, 248 kDa	
	<b>Observed MW:</b> 300 kDa	

## Applications

<b>Tested Applications:</b> WB, IF-P, ELISA	<b>Positive Controls:</b>
<b>Species Specificity:</b> human	<b>WB :</b> LNCaP cells, <b>IF-P :</b> mouse cerebellum tissue,

## Background Information

SorLA also known as SorL1 or LR11, is a multiligand receptor belonging to the LDL receptor superfamily. It is also a member of vacuolar protein sorting-10 (Vps10) family and is enriched in the brain. SorLA acts as a sorting receptor for APP and prevents amyloidogenic processing of APP. Downregulation of SorLA has been found in patients with sporadic Alzheimer disease (AD). Currently SorLA has emerged as a potential target for AD therapy. (25404298)

## Storage

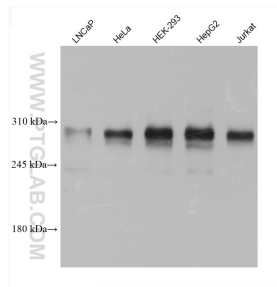
**Storage:**  
Store at -20°C. Stable for one year after shipment.  
**Storage Buffer:**  
PBS with 0.02% sodium azide and 50% glycerol pH 7.3.  
Aliquoting is unnecessary for -20°C storage

\*\*\* 20ul sizes contain 0.1% BSA

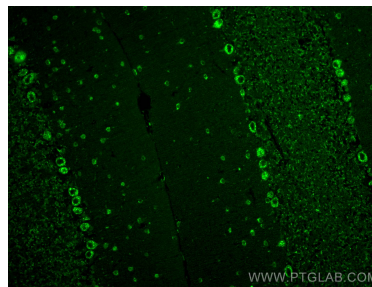
For technical support and original validation data for this product please contact:  
T: 1 (888) 4PTGLAB (1-888-478-4522) (toll free in USA), or 1(312) 455-8498 (outside USA)  
E: [proteintech@ptglab.com](mailto:proteintech@ptglab.com)  
W: [ptglab.com](http://ptglab.com)

This product is exclusively available under Proteintech Group brand and is not available to purchase from any other manufacturer.

## Selected Validation Data



Various lysates were subjected to SDS PAGE followed by western blot with 68651-1-Ig (SORL1 antibody) at dilution of 1:2000 incubated at room temperature for 1.5 hours.



Immunofluorescent analysis of (4% PFA) fixed paraffin-embedded mouse cerebellum tissue using SORL1 antibody (68651-1-Ig, Clone: 2E7D9) at dilution of 1:400 and CoraLite®488-Conjugated AffiniPure Goat Anti-Mouse IgG(H+L) (SA00013-1). Heat mediated antigen retrieval with Tris-EDTA buffer (pH 9.0).