

For Research Use Only

COL6A2 Monoclonal antibody

Catalog Number: 68652-1-Ig



Basic Information

Catalog Number: 68652-1-Ig	GenBank Accession Number: BC065509	Purification Method: Protein A purification
Size: 150ul , Concentration: 1000 ug/ml by Nanodrop;	GeneID (NCBI): 1292	CloneNo.: 3E9C2
Source: Mouse	UNIPROT ID: P12110	Recommended Dilutions: WB 1:5000-1:50000
Isotype: IgG2a	Full Name: collagen, type VI, alpha 2	
Immunogen Catalog Number: AG7134	Calculated MW: 109 kDa	
	Observed MW: 140 kDa	

Applications

Tested Applications: WB, ELISA	Positive Controls: WB : human placenta tissue, human heart tissue
Species Specificity: human	

Background Information

Collagen VI, composed of three polypeptides, alpha-1(VI), alpha-2(VI), and alpha-3(VI) chains, is a beaded filament collagen found in most connective tissues. The alpha-1(VI) and alpha-2(VI) chains are 140 kDa, while the alpha-3(VI) chain is 200-300 kDa (PMID: 3792302, 3348212). COL6A2 gene encodes the alpha-2 subunit of type VI collagen. The alpha-2(VI) subunit has a calculated molecular weight of 109 kDa, and an apparent molecular weight of 140 kDa due to posttranslational modification. Mutations in COL6A2 gene are associated with Bethlem myopathy and Ullrich scleroatonic muscular dystrophy. Three transcript variants have been identified for this gene.

Storage

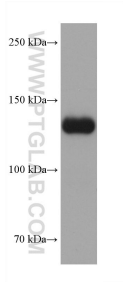
Storage:
Store at -20°C. Stable for one year after shipment.
Storage Buffer:
PBS with 0.02% sodium azide and 50% glycerol
Aliquoting is unnecessary for -20°C storage

*** 20ul sizes contain 0.1% BSA

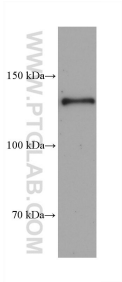
For technical support and original validation data for this product please contact:
T: 1 (888) 4PTGLAB (1-888-478-4522) (toll free in USA), or 1(312) 455-8498 (outside USA)
E: proteintech@ptglab.com
W: ptglab.com

This product is exclusively available under Proteintech Group brand and is not available to purchase from any other manufacturer.

Selected Validation Data



human placenta tissue were subjected to SDS PAGE followed by western blot with 68652-1-Ig (COL6A2 antibody) at dilution of 1:10000 incubated at room temperature for 1.5 hours.



human heart tissue were subjected to SDS PAGE followed by western blot with 68652-1-Ig (COL6A2 antibody) at dilution of 1:10000 incubated at room temperature for 1.5 hours.