

For Research Use Only

CARD9 Monoclonal antibody

Catalog Number: 68657-1-Ig



Basic Information

| | | |
|---|---|---|
| Catalog Number: 68657-1-Ig | GenBank Accession Number: BC008877 | Purification Method: Protein G purification |
| Size: 150ul , Concentration: 1000 µg/ml by Nanodrop; | GeneID (NCBI): 64170 | CloneNo.: 2F3E10 |
| Source: Mouse | UNIPROT ID: Q9H257 | Recommended Dilutions: WB 1:5000-1:50000 |
| Isotype: IgG1 | Full Name: caspase recruitment domain family, member 9 | |
| Immunogen Catalog Number: AG33643 | Calculated MW: 62 kDa | |
| | Observed MW: 55-65 kDa | |

Applications

| | |
|--|---|
| Tested Applications: WB, ELISA | Positive Controls: |
| Species Specificity: Human | WB : NK-92 cells, HL-60 cells, TF-1 cells, U-937 cells, THP-1 cells, MOLT-4 cells |

Background Information

CARD9, a member of the caspase recruitment domain (CARD) protein family, plays an important regulatory role in cell apoptosis. Defects in CARD9 are the cause of familial candidiasis type 2 (CANDF2) characterized by impaired clearance of fungal infections and results in colonization and infections of the mucosa or skin, predominantly with *Candida albicans*. CARD9 is highly expressed in spleen and regulate activation of NF-kappa-B by interaction with positive regulator of apoptosis BCL10 via the CARD domain.

Storage

Storage:
Store at -20°C. Stable for one year after shipment.
Storage Buffer:
PBS with 0.02% sodium azide and 50% glycerol pH 7.3.
Aliquoting is unnecessary for -20°C storage

*** 20ul sizes contain 0.1% BSA

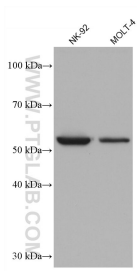
For technical support and original validation data for this product please contact:

T: 1 (888) 4PTGLAB (1-888-478-4522) (toll free
in USA), or 1(312) 455-8498 (outside USA)

E: proteintech@ptglab.com
W: ptglab.com

This product is exclusively available under Proteintech Group brand and is not available to purchase from any other manufacturer.

Selected Validation Data



Various lysates were subjected to SDS PAGE followed by western blot with 68657-1-Ig (CARD9 antibody) at dilution of 1:10000 incubated at room temperature for 1.5 hours.