

For Research Use Only

beta NGF Monoclonal antibody, PBS Only (Detector)

Catalog Number: 68661-2-PBS



Basic Information

Catalog Number: 68661-2-PBS	GenBank Accession Number: GeneID (NCBI): 4803	Purification Method: Protein G purification
Size: 100ug , Concentration: 1mg/ml by Nanodrop;	Full Name: nerve growth factor (beta polypeptide)	CloneNo.: 1B2F6
Source: Mouse		Affinity: $K_D = 3.37 \times 10^{-8}M$ $K_{off} = 2.39 \times 10^{-4}M$ $K_{on} = 7.10 \times 10^3M$
Isotype: IgG1		
Immunogen Catalog Number: HZ-1222		

Applications

Tested Applications:
Sandwich ELISA, Indirect ELISA, Sample test

Species Specificity:
human

Product Information

68661-2-PBS targets beta NGF as part of a matched antibody pair:

MP50038-1: 68661-1-PBS capture and 68661-2-PBS detection (validated in Sandwich ELISA)

Unconjugated mouse monoclonal antibody pair in PBS only (BSA and azide free) storage buffer at a concentration of 1 mg/mL, ready for conjugation.

This conjugation ready format makes antibodies ideal for use in many applications including: ELISAs, multiplex assays requiring matched pairs, mass cytometry, and multiplex imaging applications. Antibody use should be optimized by the end user for each application and assay.

Storage

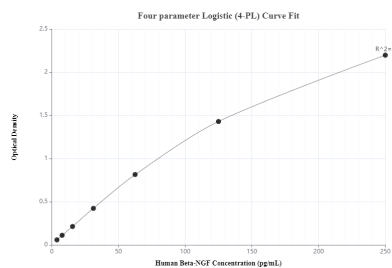
Storage:
Store at -80°C.

Storage Buffer:
PBS only, pH7.3

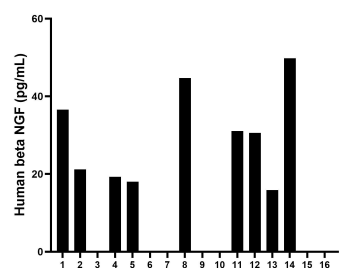
For technical support and original validation data for this product please contact:
T: 1 (888) 4PTGLAB (1-888-478-4522) (toll free in USA), or 1(312) 455-8498 (outside USA)
E: proteintech@ptglab.com
W: ptglab.com

This product is exclusively available under Proteintech Group brand and is not available to purchase from any other manufacturer.

Selected Validation Data



Sandwich ELISA standard curve of MP50038-1, NGF Monoclonal Matched Antibody Pair - PBS only. 68661-1-PBS was coated to a plate as the capture antibody and incubated with serial dilutions of standard HZ-1222. 68661-2-PBS was biotinylated as the detection antibody. Range: 3.9-250 pg/mL.



Serum of sixteen individual healthy human donors was measured. The beta NGF concentration of detected samples was determined to be 16.7 pg/mL with a range of ND-49.8 pg/mL.