

For Research Use Only

# IL-29 Monoclonal antibody, PBS Only (Detector)

Catalog Number: 68671-1-PBS



## Basic Information

<b>Catalog Number:</b> 68671-1-PBS	<b>GenBank Accession Number:</b> <b>GeneID (NCBI):</b> 282618	<b>Purification Method:</b> Protein G purification
<b>Size:</b> 100ug , Concentration: 1mg/ml by Nanodrop;	<b>Full Name:</b> interleukin 29 (interferon, lambda 1)	<b>CloneNo.:</b> 1F1G5
<b>Source:</b> Mouse		
<b>Isotype:</b> IgG1		
<b>Immunogen Catalog Number:</b> HZ-1156		

## Applications

**Tested Applications:**  
Sandwich ELISA, Indirect ELISA, Sample test

**Species Specificity:**  
human

## Product Information

68671-1-PBS targets IL-29 as part of a matched antibody pair.

MP50009-1: 66163-1-PBS capture and 68671-1-PBS detection (validated in Sandwich ELISA)

Unconjugated mouse monoclonal antibody pair in PBS only (BSA and azide free) storage buffer at a concentration of 1 mg/mL, ready for conjugation.

This conjugation ready format makes antibodies ideal for use in many applications including: ELISAs, multiplex assays requiring matched pairs, mass cytometry, and multiplex imaging applications. Antibody use should be optimized by the end user for each application and assay.

## Storage

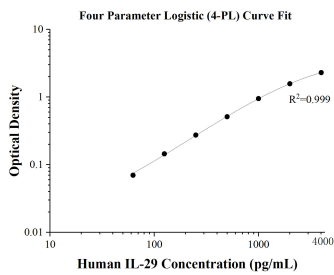
**Storage:**  
Store at -80°C.

**Storage Buffer:**  
PBS only, pH7.3

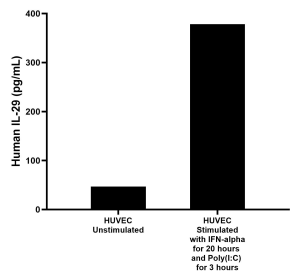
For technical support and original validation data for this product please contact:  
T: 1 (888) 4PTGLAB (1-888-478-4522) (toll free in USA), or 1(312) 455-8498 (outside USA)  
E: [proteintech@ptglab.com](mailto:proteintech@ptglab.com)  
W: [ptglab.com](http://ptglab.com)

This product is exclusively available under Proteintech Group brand and is not available to purchase from any other manufacturer.

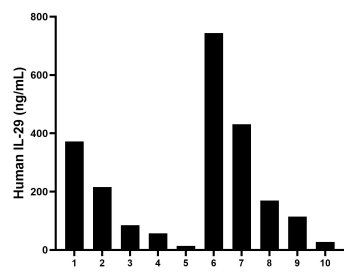
## Selected Validation Data



Sandwich ELISA standard curve of MP50009-1, IL-29 Monoclonal Matched Antibody Pair, PBS Only. Capture antibody: 66163-1-PBS. Detection antibody: 68671-1-PBS. Standard: HZ-1156. Range: 62.5-4000 pg/mL.



HUVEC human umbilical vein endothelial cells were cultured in EGM-2 and stimulated with 100 ng/mL IFN-alpha for 20 hours and 30 µg/mL Poly(I:C) for 3 hours. The mean IL-29 concentration was determined to be 46.8 pg/mL in unstimulated HUVEC supernatant, 378.1 pg/mL in stimulated HUVEC supernatant.



Serum of ten individual healthy human donors was measured. The human IL-29 concentration of detected samples was determined to be 185.8 pg/mL with a range of 13.7 - 744.0 pg/mL.