

For Research Use Only

# CD86 Monoclonal antibody, PBS Only (Detector)

Catalog Number: 68674-2-PBS



## Basic Information

<b>Catalog Number:</b> 68674-2-PBS	<b>GenBank Accession Number:</b> NM_175862	<b>Purification Method:</b> Protein G purification
<b>Size:</b> 100ug , Concentration: 1mg/ml by Nanodrop;	<b>GeneID (NCBI):</b> 942	<b>CloneNo.:</b> 1D6H7
<b>Source:</b> Mouse	<b>ENSEMBL Gene ID:</b> ENSG00000114013	
<b>Isotype:</b> IgG1	<b>UNIPROT ID:</b> P42081	
	<b>Full Name:</b> CD86 molecule	
	<b>Calculated MW:</b> 329 aa, 38 kDa	

## Applications

**Tested Applications:**  
WB, Sandwich ELISA, Indirect ELISA

**Species Specificity:**  
human

## Product Information

68674-2-PBS targets CD86 as part of a matched antibody pair:

MP50056-1: 68674-1-PBS capture and 68674-2-PBS detection (validated in Sandwich ELISA)

Unconjugated mouse monoclonal antibody pair in PBS only (BSA and azide free) storage buffer at a concentration of 1 mg/mL, ready for conjugation.

This conjugation ready format makes antibodies ideal for use in many applications including: ELISAs, multiplex assays requiring matched pairs, mass cytometry, and multiplex imaging applications. Antibody use should be optimized by the end user for each application and assay.

## Storage

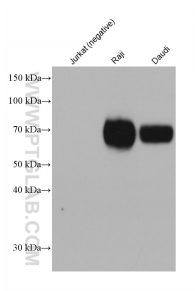
**Storage:**  
Store at -80°C.

**Storage Buffer:**  
PBS only, pH7.3

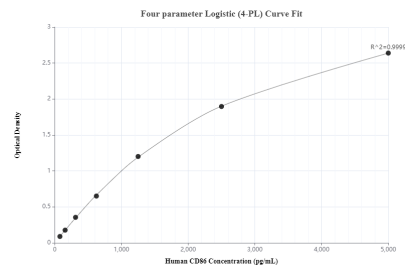
For technical support and original validation data for this product please contact:  
T: 1 (888) 4PTGLAB (1-888-478-4522) (toll free in USA), or 1(312) 455-8498 (outside USA)  
E: [proteintech@ptglab.com](mailto:proteintech@ptglab.com)  
W: [ptglab.com](http://ptglab.com)

This product is exclusively available under Proteintech Group brand and is not available to purchase from any other manufacturer.

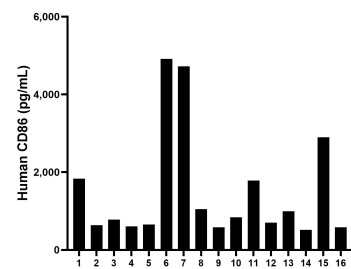
## Selected Validation Data



Various lysates were subjected to SDS PAGE followed by western blot with 68674-2-Ig (CD86 antibody) at dilution of 1:10000 incubated at room temperature for 1.5 hours. This data was developed using the same antibody clone with 68674-2-PBS in a different storage buffer formulation.



Sandwich ELISA standard curve of MP50056-1, CD86 Monoclonal Matched Antibody Pair, PBS Only. Capture antibody: 68674-1-PBS. Detection antibody: 68674-2-PBS. Standard: Eg0059. Range: 78.1-5000 pg/mL.



Serum of sixteen individual healthy human donors was measured. The human CD86 concentration of detected samples was determined to be 1,506.0 pg/mL with a range of 516.7 - 4,914.5 pg/mL.