

For Research Use Only

# CEA/CD66e Monoclonal antibody, PBS Only (Capture)

Catalog Number: 68675-1-PBS



## Basic Information

<b>Catalog Number:</b> 68675-1-PBS	<b>GenBank Accession Number:</b> BC034671	<b>Purification Method:</b> Protein G purification
<b>Size:</b> 100ug , Concentration: 1 mg/ml by Nanodrop;	<b>GeneID (NCBI):</b> 1048	<b>CloneNo.:</b> 3F5F7
<b>Source:</b> Mouse	<b>UNIPROT ID:</b> P06731	
<b>Isotype:</b> IgG1	<b>Full Name:</b> carcinoembryonic antigen-related cell adhesion molecule 5	
<b>Immunogen Catalog Number:</b> EG0247	<b>Calculated MW:</b> 77 kDa	

## Applications

**Tested Applications:**  
Sandwich ELISA, Indirect ELISA, Sample test

**Species Specificity:**  
human

## Product Information

68675-1-PBS targets CEA/CD66e as part of a matched antibody pair:

MP50057-1: 68675-1-PBS capture and 68675-2-PBS detection (validated in Sandwich ELISA)

Unconjugated mouse monoclonal antibody pair in PBS only (BSA and azide free) storage buffer at a concentration of 1 mg/mL, ready for conjugation.

This conjugation ready format makes antibodies ideal for use in many applications including: ELISAs, multiplex assays requiring matched pairs, mass cytometry, and multiplex imaging applications. Antibody use should be optimized by the end user for each application and assay.

## Storage

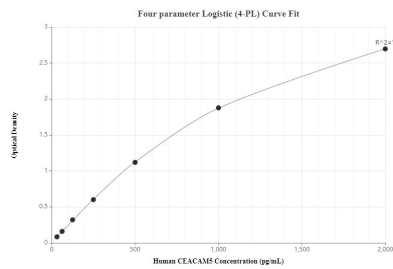
**Storage:**  
Store at -80°C.

**Storage Buffer:**  
PBS only, pH7.3

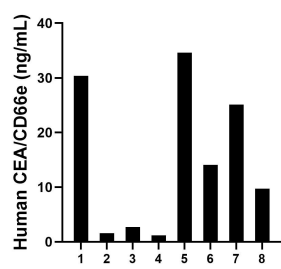
For technical support and original validation data for this product please contact:  
T: 1 (888) 4PTGLAB (1-888-478-4522) (toll free in USA), or 1(312) 455-8498 (outside USA)  
E: [proteintech@ptglab.com](mailto:proteintech@ptglab.com)  
W: [ptglab.com](http://ptglab.com)

This product is exclusively available under Proteintech Group brand and is not available to purchase from any other manufacturer.

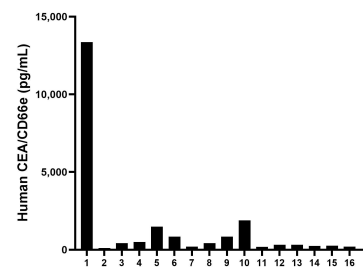
## Selected Validation Data



Sandwich ELISA standard curve of MP50057-1, CEA/CEACAM5 Monoclonal Matched Antibody Pair, PBS Only. Capture antibody: 68675-1-PBS. Detection antibody: 68675-2-PBS. Standard: Eg0247. Range: 31.25-2000 pg/mL



Saliva of eight individual healthy human donors was measured. The CEA/CD66e concentration of detected samples was determined to be 14.9 ng/mL with a range of 1.2-34.6 ng/mL



Serum of sixteen individual healthy human donors was measured. The CEA/CD66e concentration of detected samples was determined to be 1,351.2 pg/mL with a range of 109.3-13,359.6 pg/mL