

For Research Use Only

CEA/CD66e Monoclonal antibody, PBS Only (Detector)

Catalog Number: 68675-2-PBS



Basic Information

Catalog Number: 68675-2-PBS	GenBank Accession Number: BC034671	Purification Method: Protein G purification
Size: 100ug , Concentration: 1 mg/ml by Nanodrop;	GeneID (NCBI): 1048	CloneNo.: 1E10A7
Source: Mouse	UNIPROT ID: P06731	
Isotype: IgG1	Full Name: carcinoembryonic antigen-related cell adhesion molecule 5	
Immunogen Catalog Number: EG0247	Calculated MW: 77 kDa	

Applications

Tested Applications:
Sandwich ELISA, Indirect ELISA, Sample test

Species Specificity:
human

Product Information

68675-2-PBS targets CEA/CD66e as part of a matched antibody pair:

MP50057-1: 68675-1-PBS capture and 68675-2-PBS detection (validated in Sandwich ELISA)

Unconjugated mouse monoclonal antibody pair in PBS only (BSA and azide free) storage buffer at a concentration of 1 mg/mL, ready for conjugation.

This conjugation ready format makes antibodies ideal for use in many applications including: ELISAs, multiplex assays requiring matched pairs, mass cytometry, and multiplex imaging applications. Antibody use should be optimized by the end user for each application and assay.

Storage

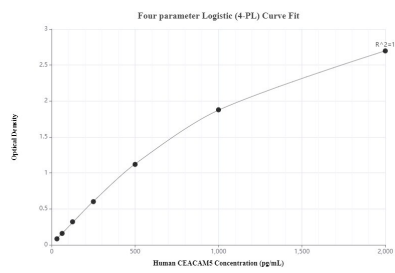
Storage:
Store at -80°C.

Storage Buffer:
PBS only, pH7.3

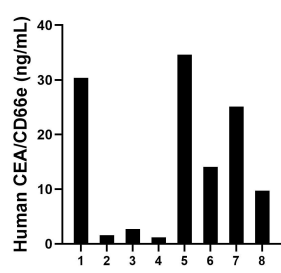
For technical support and original validation data for this product please contact:
T: 1 (888) 4PTGLAB (1-888-478-4522) (toll free in USA), or 1(312) 455-8498 (outside USA)
E: proteintech@ptglab.com
W: ptglab.com

This product is exclusively available under Proteintech Group brand and is not available to purchase from any other manufacturer.

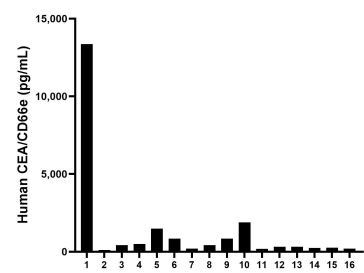
Selected Validation Data



Sandwich ELISA standard curve of MP50057-1, CEA/CEACAM5 Monoclonal Matched Antibody Pair, PBS Only. Capture antibody: 68675-1-PBS. Detection antibody: 68675-2-PBS. Standard: Eg0247. Range: 31.25-2000 pg/mL



Saliva of eight individual healthy human donors was measured. The CEA/CD66e concentration of detected samples was determined to be 14.9 ng/mL with a range of 1.2-34.6 ng/mL



Serum of sixteen individual healthy human donors was measured. The CEA/CD66e concentration of detected samples was determined to be 1,351.2 pg/mL with a range of 109.3-13,359.6 pg/mL