

For Research Use Only

VISTA Monoclonal antibody, PBS Only (Detector)

Catalog Number: 68676-2-PBS



Basic Information

Catalog Number: 68676-2-PBS	GenBank Accession Number: BC020568	Purification Method: Protein A purification
Size: 100ug , Concentration: 1mg/ml by Nanodrop;	GeneID (NCBI): 64115	CloneNo.: 1D5C3
Source: Mouse	UNIPROT ID: Q9H7M9	Affinity: $K_D = 6.58 \times 10^{-11}M$
Isotype: IgG1	Full Name: chromosome 10 open reading frame 54	$K_{off} = 3.67 \times 10^{-6}M$ $K_{on} = 5.58 \times 10^4M$
Immunogen Catalog Number: EG0017	Calculated MW: 311 aa, 34 kDa	

Applications

Tested Applications:
Sandwich ELISA, Indirect ELISA, Sample test

Species Specificity:
human

Product Information

68676-2-PBS targets VISTA as part of a matched antibody pair:

MP50058-1: 68676-1-PBS capture and 68676-2-PBS detection (validated in Sandwich ELISA)

Unconjugated mouse monoclonal antibody pair in PBS only (BSA and azide free) storage buffer at a concentration of 1 mg/mL, ready for conjugation.

This conjugation ready format makes antibodies ideal for use in many applications including: ELISAs, multiplex assays requiring matched pairs, mass cytometry, and multiplex imaging applications. Antibody use should be optimized by the end user for each application and assay.

Storage

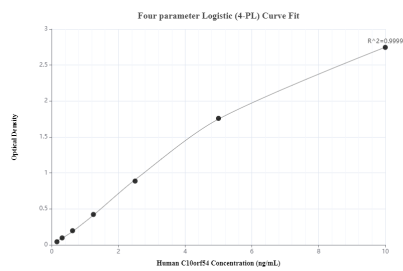
Storage:
Store at -80°C.

Storage Buffer:
PBS only, pH7.3

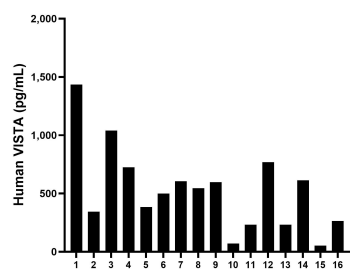
For technical support and original validation data for this product please contact:
T: 1 (888) 4PTGLAB (1-888-478-4522) (toll free in USA), or 1(312) 455-8498 (outside USA)
E: proteintech@ptglab.com
W: ptglab.com

This product is exclusively available under Proteintech Group brand and is not available to purchase from any other manufacturer.

Selected Validation Data



Sandwich ELISA standard curve of MP50058-1, VISTA Monoclonal Matched Antibody Pair - PBS only. 68676-1-PBS was coated to a plate as the capture antibody and incubated with serial dilutions of standard Eg0017. 68676-2-PBS was HRP conjugated as the detection antibody. Range: 0.156-10 ng/mL



Serum of sixteen individual healthy human donors was measured. The VISTA concentration of detected samples was determined to be 525.25 pg/mL with a range of 52.46-1,435.23 pg/mL