

For Research Use Only

# IL-1RL1/ST2 Monoclonal antibody, PBS Only (Detector)

Catalog Number: 68680-2-PBS



## Basic Information

<b>Catalog Number:</b> 68680-2-PBS	<b>GenBank Accession Number:</b> BC030975	<b>Purification Method:</b> Protein G purification
<b>Size:</b> 100ug , Concentration: 1 mg/ml by Nanodrop;	<b>GeneID (NCBI):</b> 9173	<b>CloneNo.:</b> 2F2C3
<b>Source:</b> Mouse	<b>UNIPROT ID:</b> Q01638-2	
<b>Isotype:</b> IgG1	<b>Full Name:</b> interleukin 1 receptor-like 1	
	<b>Calculated MW:</b> 63 kDa, 37 kDa, 30 kDa	

## Applications

**Tested Applications:**  
Sandwich ELISA, Indirect ELISA

**Species Specificity:**  
human

## Product Information

68680-2-PBS targets IL-1RL1/ST2 as part of a matched antibody pair:

MP50068-1: 68680-1-PBS capture and 68680-2-PBS detection (validated in Sandwich ELISA)

Unconjugated mouse monoclonal antibody pair in PBS only (BSA and azide free) storage buffer at a concentration of 1 mg/mL, ready for conjugation.

This conjugation ready format makes antibodies ideal for use in many applications including: ELISAs, multiplex assays requiring matched pairs, mass cytometry, and multiplex imaging applications. Antibody use should be optimized by the end user for each application and assay.

## Storage

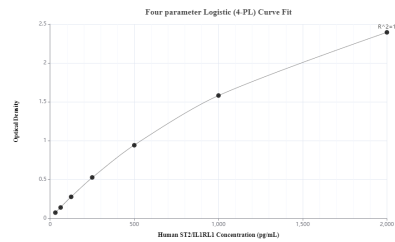
**Storage:**  
Store at -80°C.

**Storage Buffer:**  
PBS only, pH7.3

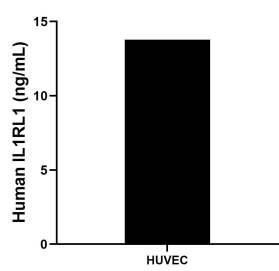
For technical support and original validation data for this product please contact:  
T: 1 (888) 4PTGLAB (1-888-478-4522) (toll free in USA), or 1(312) 455-8498 (outside USA)  
E: [proteintech@ptglab.com](mailto:proteintech@ptglab.com)  
W: [ptglab.com](http://ptglab.com)

This product is exclusively available under Proteintech Group brand and is not available to purchase from any other manufacturer.

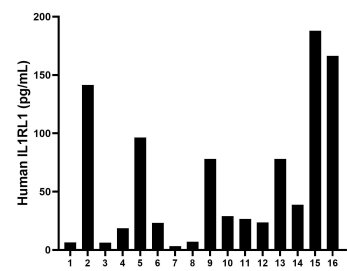
Selected Validation Data



Sandwich ELISA standard curve of MP50068-1, IL1RL1 Monoclonal Matched Antibody Pair, PBS Only. Capture antibody: 68680-1-PBS. Detection antibody: 68680-2-PBS. Standard: Eg0116. Range: 31.25-2000 pg/mL



HUVEC human umbilical vein endothelial cells were cultured in EGM-2. Aliquots of the cell culture supernatants were removed, assayed for levels of IL1RL1, and measured 13.78 ng/mL



Serum of sixteen individual healthy human donors was measured. The human IL1RL1 concentration of detected samples was determined to be 58.2 pg/mL with a range of 3.3 - 188.0 pg/mL