

For Research Use Only

HP Monoclonal antibody, PBS Only (Capture)

Catalog Number: 68682-1-PBS



Basic Information

Catalog Number: 68682-1-PBS	GenBank Accession Number: BC121125	Purification Method: Protein G purification
Size: 100ug , Concentration: 1mg/ml by Nanodrop;	GeneID (NCBI): 3240	CloneNo.: 1E1F4
Source: Mouse	UNIPROT ID: P00738	
Isotype: IgG1	Full Name: haptoglobin	
Immunogen Catalog Number: EG0445		

Applications

Tested Applications:
Sandwich ELISA, Indirect ELISA, Sample test

Species Specificity:
human

Product Information

68682-1-PBS targets HP as part of a matched antibody pair:

MP50036-1: 68682-1-PBS capture and 68682-2-PBS detection (validated in Sandwich ELISA)

Unconjugated mouse monoclonal antibody pair in PBS only (BSA and azide free) storage buffer at a concentration of 1 mg/mL, ready for conjugation.

This conjugation ready format makes antibodies ideal for use in many applications including: ELISAs, multiplex assays requiring matched pairs, mass cytometry, and multiplex imaging applications. Antibody use should be optimized by the end user for each application and assay.

Storage

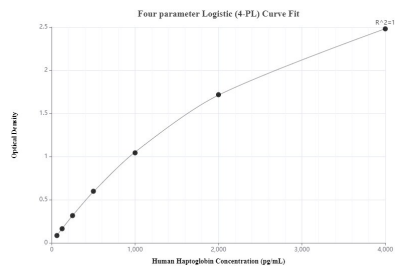
Storage:
Store at -80°C.

Storage Buffer:
PBS only, pH7.3

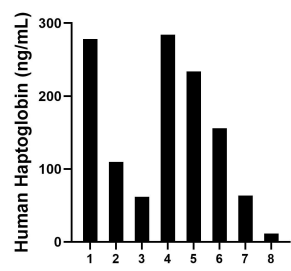
For technical support and original validation data for this product please contact:
T: 1 (888) 4PTGLAB (1-888-478-4522) (toll free in USA), or 1(312) 455-8498 (outside USA)
E: proteintech@ptglab.com
W: ptglab.com

This product is exclusively available under Proteintech Group brand and is not available to purchase from any other manufacturer.

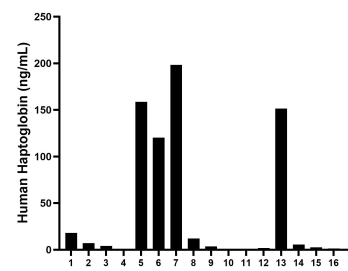
Selected Validation Data



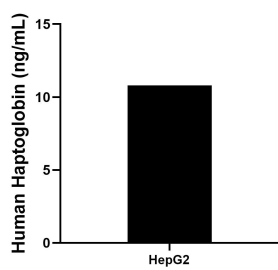
Sandwich ELISA standard curve of MP50036-1, Haptoglobin Monoclonal Matched Antibody Pair, PBS Only. Capture antibody: 68682-1-PBS. Detection antibody: 68682-2-PBS. Standard: Eg0445. Range: 62.5-4000 pg/mL.



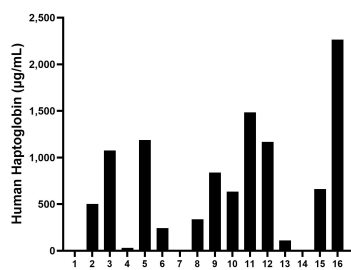
Saliva of eight individual healthy human donors was measured. The Haptoglobin concentration of detected samples was determined to be 149.8 ng/mL with a range of 11.6-284.1 ng/mL.



Urine of sixteen individual healthy human donors was measured. The Haptoglobin concentration of detected samples was determined to be 42.8 ng/mL with a range of 0.2-198.3 ng/mL.



HepG2 cells were cultured in serum-free DMEM supplemented with 2.5 mM L-glutamine, 100 U/mL penicillin, and 100 µg/mL streptomycin sulfate. An aliquot of the cell culture supernate was removed at 3 days, assayed for human Haptoglobin, and measured 10.8 ng/mL.



Serum of sixteen individual healthy human donors was measured. The Haptoglobin concentration of detected samples was determined to be 658.6 µg/mL with a range of 0.6 -2,265.0 µg/mL.