

For Research Use Only

# CD4 Monoclonal antibody, PBS Only (Detector)

Catalog Number: 68688-1-PBS



## Basic Information

<b>Catalog Number:</b> 68688-1-PBS	<b>GenBank Accession Number:</b> BC025782	<b>Purification Method:</b> Protein G purification
<b>Size:</b> 100ug , Concentration: 1mg/ml by Nanodrop;	<b>GeneID (NCBI):</b> 920	<b>CloneNo.:</b> 1E11B4
<b>Source:</b> Mouse	<b>ENSEMBL Gene ID:</b> ENSG00000010610	<b>Affinity:</b> $K_D = 1.39 \times 10^{-10}M$
<b>Isotype:</b> IgG1	<b>UNIPROT ID:</b> P01730	$K_{off} = 4.36 \times 10^{-6}M$
	<b>Full Name:</b> CD4 molecule	$K_{on} = 3.13 \times 10^4M$
	<b>Calculated MW:</b> 55 kDa	

## Applications

**Tested Applications:**  
Sandwich ELISA, Indirect ELISA

**Species Specificity:**  
human

## Product Information

68688-1-PBS targets CD4 as part of a matched antibody pair:

MP50077-1: 65147-1-PBS capture and 68688-1-PBS detection (validated in Sandwich ELISA)

Unconjugated mouse monoclonal antibody pair in PBS only (BSA and azide free) storage buffer at a concentration of 1 mg/mL, ready for conjugation.

This conjugation ready format makes antibodies ideal for use in many applications including: ELISAs, multiplex assays requiring matched pairs, mass cytometry, and multiplex imaging applications. Antibody use should be optimized by the end user for each application and assay.

## Storage

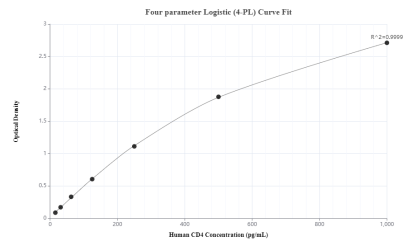
**Storage:**  
Store at -80°C.

**Storage Buffer:**  
PBS only, pH7.3

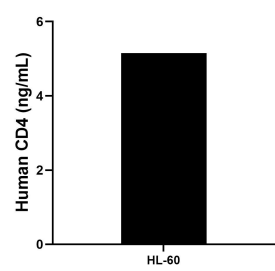
For technical support and original validation data for this product please contact:  
T: 1 (888) 4PTGLAB (1-888-478-4522) (toll free in USA), or 1(312) 455-8498 (outside USA)  
E: [proteintech@ptglab.com](mailto:proteintech@ptglab.com)  
W: [ptglab.com](http://ptglab.com)

This product is exclusively available under Proteintech Group brand and is not available to purchase from any other manufacturer.

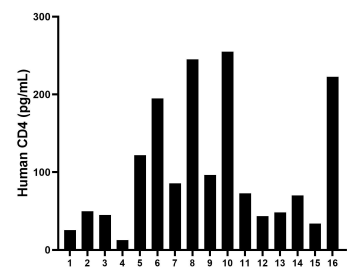
Selected Validation Data



Sandwich ELISA standard curve of MP50077-1, CD4 Monoclonal Matched Antibody Pair - PBS only. 65147-1-PBS was coated to a plate as the capture antibody and incubated with serial dilutions of standard Eg0333. 68688-1-PBS was HRP conjugated as the detection antibody. Range: 15.6-1000 pg/mL



The mean CD4 concentration was determined to be 5.16 ng/mL in HL-60 cell extract based on a 4.3 mg/mL extract load.



Serum of sixteen individual healthy human donors was measured. The human CD4 concentration of detected samples was determined to be 101.4 pg/mL with a range of 12.7 - 255.0 pg/mL