

For Research Use Only

APOE Monoclonal antibody, PBS Only (Detector)

Catalog Number: 68696-2-PBS



Basic Information

Catalog Number: 68696-2-PBS	GenBank Accession Number: BC003557	Purification Method: Protein A purification
Size: 100ug , Concentration: 1mg/ml by Nanodrop;	GeneID (NCBI): 348	CloneNo.: 1D1C3
Source: Mouse	UNIPROT ID: P02649	
Isotype: IgG2a	Full Name: Apolipoprotein E	
Immunogen Catalog Number: EG0448	Calculated MW: 36 kDa	

Applications

Tested Applications:
Sandwich ELISA, Indirect ELISA, Sample test

Species Specificity:
human

Product Information

68696-2-PBS targets APOE as part of a matched antibody pair:

MP50078-1: 68696-1-PBS capture and 68696-2-PBS detection (validated in Sandwich ELISA)

Unconjugated mouse monoclonal antibody pair in PBS only (BSA and azide free) storage buffer at a concentration of 1 mg/mL, ready for conjugation.

This conjugation ready format makes antibodies ideal for use in many applications including: ELISAs, multiplex assays requiring matched pairs, mass cytometry, and multiplex imaging applications. Antibody use should be optimized by the end user for each application and assay.

Storage

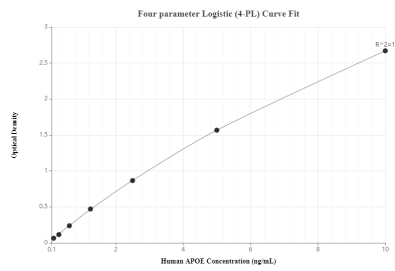
Storage:
Store at -80°C.

Storage Buffer:
PBS only, pH7.3

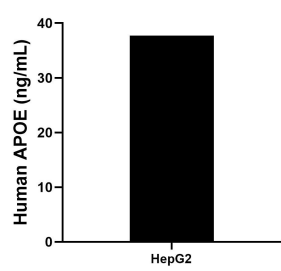
For technical support and original validation data for this product please contact:
T: 1 (888) 4PTGLAB (1-888-478-4522) (toll free in USA), or 1(312) 455-8498 (outside USA)
E: proteintech@ptglab.com
W: ptglab.com

This product is exclusively available under Proteintech Group brand and is not available to purchase from any other manufacturer.

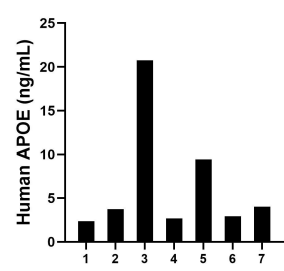
Selected Validation Data



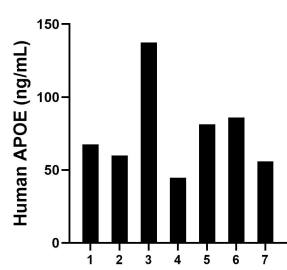
Sandwich ELISA standard curve of MP50078-1, APOE Monoclonal Matched Antibody Pair, PBS Only. Capture antibody: 68696-1-PBS. Detection antibody: 68696-2-PBS. Standard: Eg0448. Range: 0.156-10 ng/mL



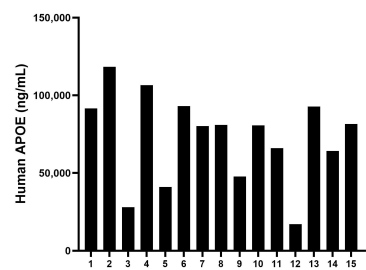
HepG2 cells were cultured in DMEM supplemented with 10% fetal bovine serum, 2 mM L-glutamine, 100 U/mL penicillin, and 100 µg/mL streptomycin sulfate. An aliquot of the cell culture supernate was removed, assayed for human APOE, and measured 37.72 ng/mL



Urine of seven individual healthy human donors was measured. The APOE concentration of detected samples was determined to be 6.56 ng/mL with a range of 2.35-20.75 ng/mL



Human milk of seven individual healthy human donors was measured. The APOE concentration of detected samples was determined to be 76.11 ng/mL with a range of 44.74-137.34 ng/mL



Serum of sixteen individual healthy human donors was measured. The APOE concentration of detected samples was determined to be 72,675.66 ng/mL with a range of 17,060.26-118,380.99 ng/mL