

For Research Use Only

SDCCAG1 Monoclonal antibody

Catalog Number: 68708-1-Ig



Basic Information

Catalog Number:

68708-1-Ig

Size:

150ul , Concentration: 1000 ug/ml by Nanodrop;

Source:

Mouse

Isotype:

IgG2a

Immunogen Catalog Number:

AG2467

GenBank Accession Number:

BC020794

GeneID (NCBI):

9147

UNIPROT ID:

O60524

Full Name:

serologically defined colon cancer antigen 1

Calculated MW:

1076 aa, 123 kDa

Observed MW:

130-140 kDa

Purification Method:

Protein A purification

CloneNo.:

3C8A1

Recommended Dilutions:

WB 1:2000-1:10000

Applications

Tested Applications:

WB, ELISA

Species Specificity:

human

Positive Controls:

WB : U2OS cells, A549 cells, LNCaP cells, HeLa cells, MCF-7 cells, Jurkat cells, K-562 cells

Background Information

SDCCAG1, also named as NEMF, is a nuclear export mediator. It can be bound to translocon-engaged 60S subunits on native ER membranes. Human SDCCAG1 has been implicated in lung cancers and it may function as a tumor suppressor gene. SDCCAG1 inactivation contributes to the transformed state of human lung cancer cells (PMID:16103875, 10575219). NEMF is also regarded as a potential biomarker for the detection of active and latent TB infections (PMID: 26818387).

Storage

Storage:

Store at -20°C. Stable for one year after shipment.

Storage Buffer:

PBS with 0.02% sodium azide and 50% glycerol pH 7.3.

Aliquoting is unnecessary for -20°C storage

*** 20ul sizes contain 0.1% BSA

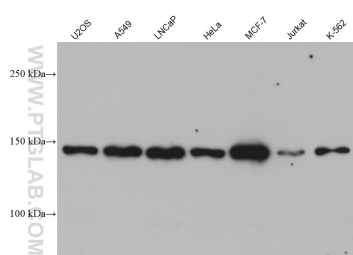
For technical support and original validation data for this product please contact:

T: 1 (888) 4PTGLAB (1-888-478-4522) (toll free in USA), or 1(312) 455-8498 (outside USA)

E: proteintech@ptglab.com
W: ptglab.com

This product is exclusively available under Proteintech Group brand and is not available to purchase from any other manufacturer.

Selected Validation Data



Various lysates were subjected to SDS PAGE followed by western blot with 68708-1-Ig (SDCCAG1 antibody) at dilution of 1:5000 incubated at room temperature for 1.5 hours.