

For Research Use Only

# SDCCAG1 Monoclonal antibody, PBS Only



Catalog Number: 68708-1-PBS

## Basic Information

<b>Catalog Number:</b> 68708-1-PBS	<b>GenBank Accession Number:</b> BC020794	<b>Purification Method:</b> Protein A purification
<b>Size:</b> 100ug , Concentration: 1mg/ml by Nanodrop;	<b>GeneID (NCBI):</b> 9147	<b>CloneNo.:</b> 3C8A1
<b>Source:</b> Mouse	<b>UNIPROT ID:</b> O60524	
<b>Isotype:</b> IgG2a	<b>Full Name:</b> serologically defined colon cancer antigen 1	
<b>Immunogen Catalog Number:</b> AG2467	<b>Calculated MW:</b> 1076 aa, 123 kDa	
	<b>Observed MW:</b> 130-140 kDa	

## Applications

**Tested Applications:**  
WB, Indirect ELISA

**Species Specificity:**  
human

## Background Information

SDCCAG1, also named as NEMF, is a nuclear export mediator. It can be bound to translocon-engaged 60S subunits on native ER membranes. Human SDCCAG1 has been implicated in lung cancers and it may function as a tumor suppressor gene. SDCCAG1 inactivation contributes to the transformed state of human lung cancer cells (PMID:16103875, 10575219). NEMF is also regarded as a potential biomarker for the detection of active and latent TB infections (PMID: 26818387).

## Storage

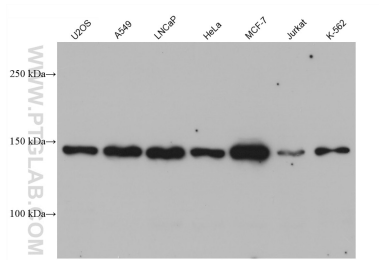
**Storage:**  
Store at -80°C.

**Storage Buffer:**  
PBS Only

For technical support and original validation data for this product please contact:  
T: 1 (888) 4PTGLAB (1-888-478-4522) (toll free in USA), or 1(312) 455-8498 (outside USA)  
E: [proteintech@ptglab.com](mailto:proteintech@ptglab.com)  
W: [ptglab.com](http://ptglab.com)

This product is exclusively available under Proteintech Group brand and is not available to purchase from any other manufacturer.

## Selected Validation Data



Various lysates were subjected to SDS PAGE followed by western blot with 68708-1-Ig (SDCCAG1 antibody) at dilution of 1:5000 incubated at room temperature for 1.5 hours. This data was developed using the same antibody clone with 68708-1-PBS in a different storage buffer formulation.