

For Research Use Only

TPX2 Monoclonal antibody

Catalog Number: 68712-1-Ig



Basic Information

Catalog Number: 68712-1-Ig	GenBank Accession Number: BC020207	Purification Method: Protein A purification
Size: 150ul , Concentration: 1000 µg/ml by Nanodrop;	GeneID (NCBI): 22974	CloneNo.: 2E10C1
Source: Mouse	UNIPROT ID: Q9ULW0	Recommended Dilutions: WB 1:5000-1:50000
Isotype: IgG2b	Full Name: TPX2, microtubule-associated, homolog (Xenopus laevis)	
Immunogen Catalog Number: AG33683	Calculated MW: 747 aa, 86 kDa	
	Observed MW: 98 kDa	

Applications

Tested Applications: WB, ELISA	Positive Controls:
Species Specificity: Human, mouse, rat	WB : A549 cells, HEK-293 cells, Jurkat cells, K-562 cells, MCF-7 cells, HeLa cells, U2OS cells, HSC-T6 cells, NIH/3T3 cells

Background Information

TPX2, also known as DIL2, p10, is a microtubule organization- and cell cycle-associated protein. In the early stage of mitosis, TPX2 is released in a RanGTP-dependent manner and plays a significant role in mitotic spindle formation and subsequent proper segregation of chromosomes during cell division. Furthermore, during interphase, TPX2 is involved in DNA damage response by regulation of γ -H2AX signals (PMID: 25914189). Aberrant expression of TPX2 leads to improper spindle assembly and chromosomal instability. Overexpressed in cancers, TPX2 is being established as the marker for the diagnosis and prognosis of malignancies (PMID: 24556998).

Storage

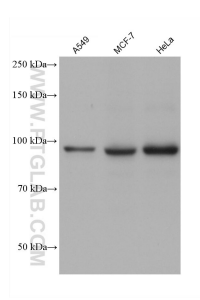
Storage:
Store at -20°C. Stable for one year after shipment.
Storage Buffer:
PBS with 0.02% sodium azide and 50% glycerol pH 7.3.
Aliquoting is unnecessary for -20°C storage

*** 20ul sizes contain 0.1% BSA

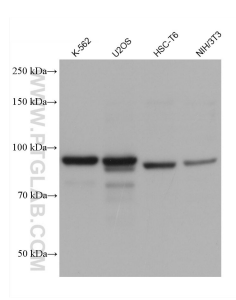
For technical support and original validation data for this product please contact:
T: 1 (888) 4PTGLAB (1-888-478-4522) (toll free in USA), or 1(312) 455-8498 (outside USA)
E: proteintech@ptglab.com
W: ptglab.com

This product is exclusively available under Proteintech Group brand and is not available to purchase from any other manufacturer.

Selected Validation Data



Various lysates were subjected to SDS PAGE followed by western blot with 68712-1-Ig (TPX2 antibody) at dilution of 1:20000 incubated at room temperature for 1.5 hours.



Various lysates were subjected to SDS PAGE followed by western blot with 68712-1-Ig (TPX2 antibody) at dilution of 1:20000 incubated at room temperature for 1.5 hours.