

For Research Use Only

# CEP135 Monoclonal antibody

Catalog Number: 68715-1-Ig



## Basic Information

<b>Catalog Number:</b> 68715-1-Ig	<b>GenBank Accession Number:</b> BC136535	<b>Purification Method:</b> Protein G purification
<b>Size:</b> 150ul , Concentration: 1000 ug/ml by Nanodrop;	<b>GeneID (NCBI):</b> 9662	<b>CloneNo.:</b> 3C4B7
<b>Source:</b> Mouse	<b>UNIPROT ID:</b> Q66GS9	<b>Recommended Dilutions:</b> WB 1:5000-1:50000 IF/ICC 1:200-1:800
<b>Isotype:</b> IgG1	<b>Full Name:</b> centrosomal protein 135kDa	
<b>Immunogen Catalog Number:</b> AG19122	<b>Calculated MW:</b> 1140 aa, 134 kDa	
	<b>Observed MW:</b> 135 kDa	

## Applications

<b>Tested Applications:</b> WB, IF/ICC, ELISA	<b>Positive Controls:</b>
<b>Species Specificity:</b> human	<b>WB :</b> A549 cells, LNCaP cells, HeLa cells, HEK-293 cells, Jurkat cells, K-562 cells, U2OS cells
	<b>IF/ICC :</b> HeLa cells,

## Background Information

CEP135 is a 135 kDa centrosomal protein that is present in a wide range of organisms. CEP135 is located at the centrosome throughout the cell cycle, and localization is independent of the microtubule network. It distributes throughout the centrosomal area in association with the electron-dense material surrounding centrioles.

## Storage

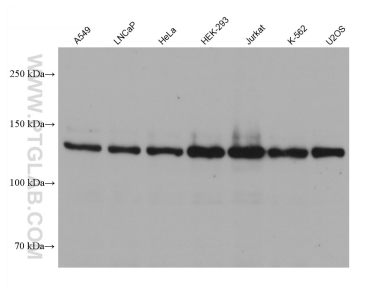
**Storage:**  
Store at -20°C. Stable for one year after shipment.  
**Storage Buffer:**  
PBS with 0.02% sodium azide and 50% glycerol pH 7.3.  
**Aliquoting is unnecessary for -20°C storage**

\*\*\* 20ul sizes contain 0.1% BSA

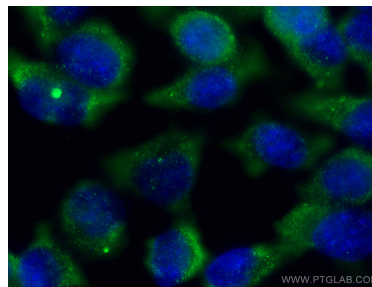
For technical support and original validation data for this product please contact:  
T: 1 (888) 4PTGLAB (1-888-478-4522) (toll free in USA), or 1(312) 455-8498 (outside USA)  
E: [proteintech@ptglab.com](mailto:proteintech@ptglab.com)  
W: [ptglab.com](http://ptglab.com)

This product is exclusively available under Proteintech Group brand and is not available to purchase from any other manufacturer.

## Selected Validation Data



Various lysates were subjected to SDS PAGE followed by western blot with 68715-1-Ig (CEP135 antibody) at dilution of 1:10000 incubated at room temperature for 1.5 hours.



Immunofluorescent analysis of (-20°C Ethanol) fixed HeLa cells using CEP135 antibody (68715-1-Ig, Clone: 3C4B7) at dilution of 1:400 and CoraLite®488-Conjugated AffiniPure Goat Anti-Mouse IgG(H+L) (SA00013-1).