

For Research Use Only

# SPDEF Monoclonal antibody

Catalog Number: 68716-1-Ig



## Basic Information

**Catalog Number:**

68716-1-Ig

**Size:**

150ul , Concentration: 1000 ug/ml by 25803

Nanodrop;

**Source:**

Mouse

**Isotype:**

IgG1

**Immunogen Catalog Number:**

AG33739

**GenBank Accession Number:**

BC021299

**GeneID (NCBI):**

25803

**UNIPROT ID:**

O95238

**Full Name:**

SAM pointed domain containing ets transcription factor

**Calculated MW:**

335 aa, 38 kDa

**Observed MW:**

38 kDa

**Purification Method:**

Protein G purification

**CloneNo.:**

2A1C1

**Recommended Dilutions:**

WB 1:1000-1:4000

## Applications

**Tested Applications:**

WB, ELISA

**Species Specificity:**

Human

**Positive Controls:**

WB : EC109 cells, A549 cells, HeLa cells, MCF-7 cells, LNCaP cells, PC-3 cells, DU 145 cells

## Storage

**Storage:**

Store at -20°C. Stable for one year after shipment.

**Storage Buffer:**

PBS with 0.02% sodium azide and 50% glycerol pH 7.3.

Aliquoting is unnecessary for -20°C storage

\*\*\* 20ul sizes contain 0.1% BSA

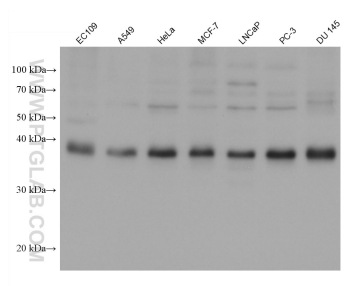
For technical support and original validation data for this product please contact:

T: 1 (888) 4PTGLAB (1-888-478-4522) (toll free in USA), or 1(312) 455-8498 (outside USA)

E: [proteintech@ptglab.com](mailto:proteintech@ptglab.com)  
W: [ptglab.com](http://ptglab.com)

This product is exclusively available under Proteintech Group brand and is not available to purchase from any other manufacturer.

## Selected Validation Data



Various lysates were subjected to SDS PAGE followed by western blot with 68716-1-Ig (SPDEF antibody) at dilution of 1:2000 incubated at room temperature for 1.5 hours.