

For Research Use Only

SPDEF Monoclonal antibody, PBS Only



Catalog Number: 68716-1-PBS

Basic Information

Catalog Number:

68716-1-PBS

Size:

100ug , Concentration: 1 mg/ml by Nanodrop;

Source:

Mouse

Isotype:

IgG1

Immunogen Catalog Number:

AG33739

GenBank Accession Number:

BC021299

GeneID (NCBI):

25803

UNIPROT ID:

O95238

Full Name:

SAM pointed domain containing ets transcription factor

Calculated MW:

335 aa, 38 kDa

Observed MW:

38 kDa

Purification Method:

Protein G purification

CloneNo.:

2A1C1

Applications

Tested Applications:

WB, Indirect ELISA

Species Specificity:

Human

Storage

Storage:

Store at -80°C.

Storage Buffer:

PBS Only

For technical support and original validation data for this product please contact:

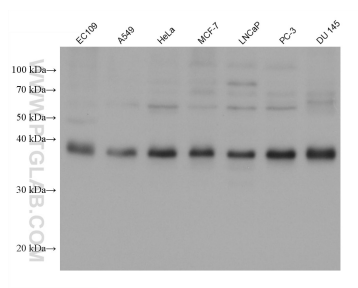
T: 1 (888) 4PTGLAB (1-888-478-4522) (toll free in USA), or 1(312) 455-8498 (outside USA)

E: proteintech@ptglab.com

W: ptglab.com

This product is exclusively available under Proteintech Group brand and is not available to purchase from any other manufacturer.

Selected Validation Data



Various lysates were subjected to SDS PAGE followed by western blot with 68716-1-Ig (SPDEF antibody) at dilution of 1:2000 incubated at room temperature for 1.5 hours. This data was developed using the same antibody clone with 68716-1-PBS in a different storage buffer formulation.