

For Research Use Only

# EMC7/C15orf24 (Human Specific) Monoclonal antibody



Catalog Number: 68722-1-Ig

## Basic Information

<b>Catalog Number:</b> 68722-1-Ig	<b>GenBank Accession Number:</b> BC104934	<b>Purification Method:</b> Protein G purification
<b>Size:</b> 150ul , Concentration: 1000 µg/ml by Nanodrop;	<b>GeneID (NCBI):</b> 56851	<b>CloneNo.:</b> 1D7A6
<b>Source:</b> Mouse	<b>UNIPROT ID:</b> Q9NPA0	<b>Recommended Dilutions:</b> WB 1:5000-1:50000
<b>Isotype:</b> IgG1	<b>Full Name:</b> chromosome 15 open reading frame 24	
<b>Immunogen Catalog Number:</b> AG26813	<b>Observed MW:</b> 20-26 kDa	

## Applications

<b>Tested Applications:</b> WB, ELISA	<b>Positive Controls:</b> WB : HeLa cells, LNCaP cells, MCF-7 cells, HEK-293 cells, Jurkat cells, K-562 cells, U2OS cells
<b>Species Specificity:</b> Human	

## Background Information

The mammalian ER membrane complex (EMC) is composed of 10 subunits, EMC 1-10. Endoplasmic reticulum membrane protein complex subunit 7 (EMC7, also named C15orf24) is part of the endoplasmic reticulum membrane protein complex (EMC) that enables the energy-independent insertion into endoplasmic reticulum membranes of newly synthesized membrane proteins.

## Storage

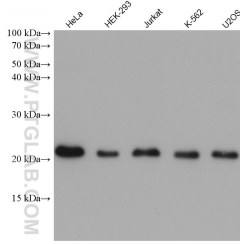
**Storage:**  
Store at -20°C. Stable for one year after shipment.  
**Storage Buffer:**  
PBS with 0.02% sodium azide and 50% glycerol pH 7.3.  
Aliquoting is unnecessary for -20°C storage

\*\*\* 20ul sizes contain 0.1% BSA

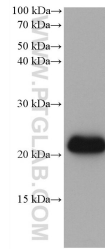
For technical support and original validation data for this product please contact:  
T: 1 (888) 4PTGLAB (1-888-478-4522) (toll free in USA), or 1(312) 455-8498 (outside USA)      E: proteintech@ptglab.com  
W: ptglab.com

This product is exclusively available under Proteintech Group brand and is not available to purchase from any other manufacturer.

## Selected Validation Data



Various lysates were subjected to SDS PAGE followed by western blot with 68722-1-Ig (C15orf24 antibody) at dilution of 1:10000 incubated at room temperature for 1.5 hours.



LNCaP cells were subjected to SDS PAGE followed by western blot with 68722-1-Ig (EMC7/C15orf24 antibody) at dilution of 1:10000 incubated at room temperature for 1.5 hours.