

For Research Use Only

# EMC7/C15orf24 (Human Specific) Monoclonal antibody, PBS Only



Catalog Number: 68722-1-PBS

## Basic Information

<b>Catalog Number:</b> 68722-1-PBS	<b>GenBank Accession Number:</b> BC104934	<b>Purification Method:</b> Protein G purification
<b>Size:</b> 100ug , Concentration: 1 mg/ml by Nanodrop;	<b>GeneID (NCBI):</b> 56851	<b>CloneNo.:</b> 1D7A6
<b>Source:</b> Mouse	<b>UNIPROT ID:</b> Q9NPA0	
<b>Isotype:</b> IgG1	<b>Full Name:</b> chromosome 15 open reading frame 24	
<b>Immunogen Catalog Number:</b> AG26813	<b>Observed MW:</b> 20-26 kDa	

## Applications

**Tested Applications:**  
WB, Indirect ELISA

**Species Specificity:**  
Human

## Background Information

The mammalian ER membrane complex (EMC) is composed of 10 subunits, EMC 1-10. Endoplasmic reticulum membrane protein complex subunit 7 (EMC7, also named C15orf24) is part of the endoplasmic reticulum membrane protein complex (EMC) that enables the energy-independent insertion into endoplasmic reticulum membranes of newly synthesized membrane proteins.

## Storage

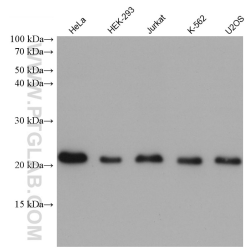
**Storage:**  
Store at -80°C.

**Storage Buffer:**  
PBS Only

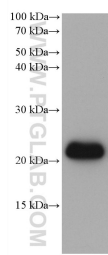
For technical support and original validation data for this product please contact:  
T: 1 (888) 4PTGLAB (1-888-478-4522) (toll free in USA), or 1(312) 455-8498 (outside USA)  
E: [proteintech@ptglab.com](mailto:proteintech@ptglab.com)  
W: [ptglab.com](http://ptglab.com)

This product is exclusively available under Proteintech Group brand and is not available to purchase from any other manufacturer.

## Selected Validation Data



Various lysates were subjected to SDS PAGE followed by western blot with 68722-1-Ig (C15orf24 antibody) at dilution of 1:10000 incubated at room temperature for 1.5 hours. This data was developed using the same antibody clone with 68722-1-PBS in a different storage buffer formulation.



LNCaP cells were subjected to SDS PAGE followed by western blot with 68722-1-Ig (EMC7/C15orf24 antibody) at dilution of 1:10000 incubated at room temperature for 1.5 hours. This data was developed using the same antibody clone with 68722-1-PBS in a different storage buffer formulation.