

For Research Use Only

EMC7/C15orf24 Monoclonal antibody

Catalog Number: 68722-2-Ig



Basic Information

Catalog Number: 68722-2-Ig	GenBank Accession Number: BC104934	Purification Method: Protein A purification
Size: 150ul , Concentration: 1000 ug/ml by Nanodrop;	GeneID (NCBI): 56851	CloneNo.: 1A10E1
Source: Mouse	UNIPROT ID: Q9NPA0	Recommended Dilutions: WB 1:5000-1:50000
Isotype: IgG2b	Full Name: chromosome 15 open reading frame 24	
Immunogen Catalog Number: AG26813	Observed MW: 20-26 kDa	

Applications

Tested Applications: WB, ELISA	Positive Controls: WB : HSC-T6 cells, LNCaP cells, MCF-7 cells, HeLa cells, HEK-293 cells, Jurkat cells, K-562 cells, U2OS cells, NIH/3T3 cells
Species Specificity: Human, Mouse , Rat	

Background Information

The mammalian ER membrane complex (EMC) is composed of 10 subunits, EMC 1-10. Endoplasmic reticulum membrane protein complex subunit 7(EMC7, also named C15orf24) is part of the endoplasmic reticulum membrane protein complex (EMC) that enables the energy-independent insertion into endoplasmic reticulum membranes of newly synthesized membrane proteins.

Storage

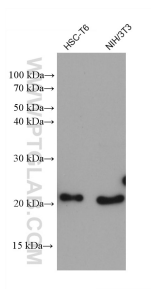
Storage:
Store at -20°C. Stable for one year after shipment.
Storage Buffer:
PBS with 0.02% sodium azide and 50% glycerol pH 7.3.
Aliquoting is unnecessary for -20°C storage

*** 20ul sizes contain 0.1% BSA

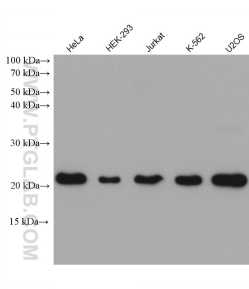
For technical support and original validation data for this product please contact:
T: 1 (888) 4PTGLAB (1-888-478-4522) (toll free in USA), or 1(312) 455-8498 (outside USA)
E: proteintech@ptglab.com
W: ptglab.com

This product is exclusively available under Proteintech Group brand and is not available to purchase from any other manufacturer.

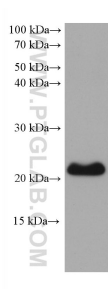
Selected Validation Data



Various lysates were subjected to SDS PAGE followed by western blot with 68722-2-Ig (C15orf24 antibody) at dilution of 1:10000 incubated at room temperature for 1.5 hours.



Various lysates were subjected to SDS PAGE followed by western blot with 68722-2-Ig (C15orf24 antibody) at dilution of 1:10000 incubated at room temperature for 1.5 hours.



LNCaP cells were subjected to SDS PAGE followed by western blot with 68722-2-Ig (C15orf24 antibody) at dilution of 1:10000 incubated at room temperature for 1.5 hours.