

For Research Use Only

# EMC7/C15orf24 Monoclonal antibody



Catalog Number: 68722-2-Ig

## Basic Information

|  |  |   |
|--|--|---|
| <b>Catalog Number:</b><br>68722-2-Ig                           | <b>GenBank Accession Number:</b><br>BC104934             | <b>Purification Method:</b><br>Protein A purification |
| <b>Size:</b><br>150ul , Concentration: 1000 µg/ml by Nanodrop; | <b>GeneID (NCBI):</b><br>56851                           | <b>CloneNo.:</b><br>1A10E1                            |
| <b>Source:</b><br>Mouse  | <b>UNIPROT ID:</b><br>Q9NPA0                             | <b>Recommended Dilutions:</b><br>WB 1:5000-1:50000    |
| <b>Isotype:</b><br>IgG2b                                       | <b>Full Name:</b><br>chromosome 15 open reading frame 24 |   |
| <b>Immunogen Catalog Number:</b><br>AG26813                    | <b>Observed MW:</b><br>20-26 kDa                         |   |

## Applications

|   |   |
|---|---|
| <b>Tested Applications:</b><br>WB, ELISA          | <b>Positive Controls:</b><br>WB : HSC-T6 cells, LNCaP cells, MCF-7 cells, HeLa cells, HEK-293 cells, Jurkat cells, K-562 cells, U2OS cells, NIH/3T3 cells |
| <b>Species Specificity:</b><br>Human, Mouse , Rat |   |

## Background Information

The mammalian ER membrane complex (EMC) is composed of 10 subunits, EMC 1-10. Endoplasmic reticulum membrane protein complex subunit 7(EMC7, also named C15orf24) is part of the endoplasmic reticulum membrane protein complex (EMC) that enables the energy-independent insertion into endoplasmic reticulum membranes of newly synthesized membrane proteins.

## Storage

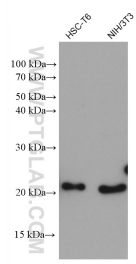
**Storage:**  
Store at -20°C. Stable for one year after shipment.  
**Storage Buffer:**  
PBS with 0.02% sodium azide and 50% glycerol pH 7.3.  
Aliquoting is unnecessary for -20°C storage

\*\*\* 20ul sizes contain 0.1% BSA

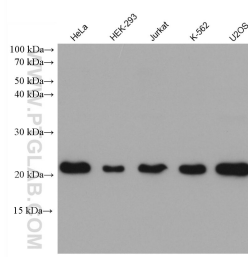
For technical support and original validation data for this product please contact:  
T: 1 (888) 4PTGLAB (1-888-478-4522) (toll free in USA), or 1(312) 455-8498 (outside USA)      E: proteintech@ptglab.com  
W: ptglab.com

This product is exclusively available under Proteintech Group brand and is not available to purchase from any other manufacturer.

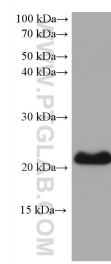
## Selected Validation Data



Various lysates were subjected to SDS PAGE followed by western blot with 68722-2-Ig (C15orf24 antibody) at dilution of 1:10000 incubated at room temperature for 1.5 hours.



Various lysates were subjected to SDS PAGE followed by western blot with 68722-2-Ig (C15orf24 antibody) at dilution of 1:10000 incubated at room temperature for 1.5 hours.



LNCaP cells were subjected to SDS PAGE followed by western blot with 68722-2-Ig (C15orf24 antibody) at dilution of 1:10000 incubated at room temperature for 1.5 hours.