

For Research Use Only

ENPP2 Monoclonal antibody

Catalog Number: 68724-1-Ig



Basic Information

Catalog Number: 68724-1-Ig	GenBank Accession Number: BC034961	Purification Method: Protein A purification
Size: 150ul , Concentration: 1000 µg/ml by Nanodrop;	GeneID (NCBI): 5168	CloneNo.: 2A10D9
Source: Mouse	UNIPROT ID: Q13822	Recommended Dilutions: WB 1:1000-1:4000
Isotype: IgG2a	Full Name: ectonucleotide pyrophosphatase/phosphodiesterase 2	
Immunogen Catalog Number: AG5499	Calculated MW: 99 kDa	
	Observed MW: 100-110 kDa	

Applications

Tested Applications: WB, ELISA	Positive Controls: WB : pig brain tissue, HuH-7 cells, U-87 MG cells, rabbit brain tissue, rat brain tissue, mouse brain tissue
Species Specificity: Human, mouse, rat, rabbit, pig	

Background Information

ENPP2, Autotaxin or Extracellular lysophospholipase D, is a 863 amino acid secreted protein, which is detected in blood plasma (at protein level) (PubMed:12176993, PubMed:26371182). ENPP2 is Predominantly expressed in brain, placenta, ovary, and small intestine. ENPP2 is expressed in a number of carcinomas such as hepatocellular and prostate carcinoma, neuroblastoma and non-small-cell lung cancer. ENPP2 is expressed in body fluids such as plasma, cerebral spinal fluid (CSF), saliva, follicular and amniotic fluids. The calculated molecular weight of ENPP2 is about 100 kDa (PMID: 22301782), but modified ENPP2 is 120 kDa (PMID: 19808661). ENPP2 Hydrolyzes lysophospholipids to produce the signaling molecule lysophosphatidic acid (LPA) in extracellular fluids (PubMed:15769751, PubMed:26371182, PubMed:27754931).

Storage

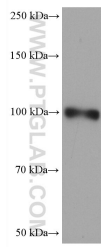
Storage:
Store at -20°C. Stable for one year after shipment.
Storage Buffer:
PBS with 0.02% sodium azide and 50% glycerol pH 7.3.
Aliquoting is unnecessary for -20°C storage

*** 20ul sizes contain 0.1% BSA

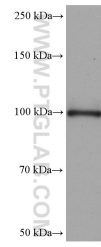
For technical support and original validation data for this product please contact:
T: 1 (888) 4PTGLAB (1-888-478-4522) (toll free in USA), or 1(312) 455-8498 (outside USA)
E: proteintech@ptglab.com
W: ptglab.com

This product is exclusively available under Proteintech Group brand and is not available to purchase from any other manufacturer.

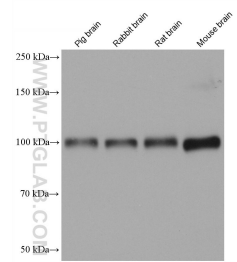
Selected Validation Data



HuH-7 cells were subjected to SDS PAGE followed by western blot with 68724-1-Ig (ENPP2 antibody) at dilution of 1:2000 incubated at room temperature for 1.5 hours.



U-87 MG cells were subjected to SDS PAGE followed by western blot with 68724-1-Ig (ENPP2 antibody) at dilution of 1:2000 incubated at room temperature for 1.5 hours.



Various lysates were subjected to SDS PAGE followed by western blot with 68724-1-Ig (ENPP2 antibody) at dilution of 1:2000 incubated at room temperature for 1.5 hours.