

For Research Use Only

# ENPP2 Monoclonal antibody, PBS Only

Catalog Number: 68724-1-PBS



## Basic Information

<b>Catalog Number:</b> 68724-1-PBS	<b>GenBank Accession Number:</b> BC034961	<b>Purification Method:</b> Protein A purification
<b>Size:</b> 100ug , Concentration: 1mg/ml by Nanodrop;	<b>GeneID (NCBI):</b> 5168	<b>CloneNo.:</b> 2A10D9
<b>Source:</b> Mouse	<b>UNIPROT ID:</b> Q13822	
<b>Isotype:</b> IgG2a	<b>Full Name:</b> ectonucleotide pyrophosphatase/phosphodiesterase 2	
<b>Immunogen Catalog Number:</b> AG5499	<b>Calculated MW:</b> 99 kDa	
	<b>Observed MW:</b> 100-110 kDa	

## Applications

**Tested Applications:**  
WB, Indirect ELISA

**Species Specificity:**  
human, mouse, rat, pig, rabbit

## Background Information

ENPP2, Autotaxin or Extracellular lysophospholipase D, is a 863 amino acid secreted protein, which is detected in blood plasma (at protein level) (PubMed:12176993, PubMed:26371182). ENPP2 is Predominantly expressed in brain, placenta, ovary, and small intestine. ENPP2 is expressed in a number of carcinomas such as hepatocellular and prostate carcinoma, neuroblastoma and non-small-cell lung cancer. ENPP2 is expressed in body fluids such as plasma, cerebral spinal fluid (CSF), saliva, follicular and amniotic fluids. The calculated molecular weight of ENPP2 is about 100 kDa (PMID: 22301782), but modified ENPP2 is 120 kDa (PMID: 19808661). ENPP2 Hydrolyzes lysophospholipids to produce the signaling molecule lysophosphatidic acid (LPA) in extracellular fluids (PubMed:15769751, PubMed:26371182, PubMed:27754931).

## Storage

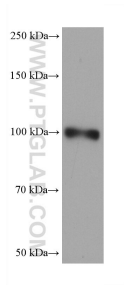
**Storage:**  
Store at -80°C.

**Storage Buffer:**  
PBS Only

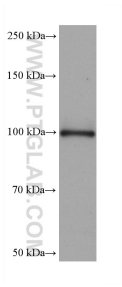
For technical support and original validation data for this product please contact:  
T: 1 (888) 4PTGLAB (1-888-478-4522) (toll free in USA), or 1(312) 455-8498 (outside USA)  
E: [proteintech@ptglab.com](mailto:proteintech@ptglab.com)  
W: [ptglab.com](http://ptglab.com)

This product is exclusively available under Proteintech Group brand and is not available to purchase from any other manufacturer.

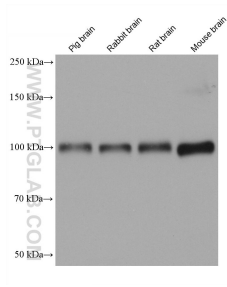
## Selected Validation Data



HuH-7 cells were subjected to SDS PAGE followed by western blot with 68724-1-Ig (ENPP2 antibody) at dilution of 1:2000 incubated at room temperature for 1.5 hours. This data was developed using the same antibody clone with 68724-1-PBS in a different storage buffer formulation.



U-87 MG cells were subjected to SDS PAGE followed by western blot with 68724-1-Ig (ENPP2 antibody) at dilution of 1:2000 incubated at room temperature for 1.5 hours. This data was developed using the same antibody clone with 68724-1-PBS in a different storage buffer formulation.



Various lysates were subjected to SDS PAGE followed by western blot with 68724-1-Ig (ENPP2 antibody) at dilution of 1:2000 incubated at room temperature for 1.5 hours. This data was developed using the same antibody clone with 68724-1-PBS in a different storage buffer formulation.