

For Research Use Only

# AP1M1 Monoclonal antibody

Catalog Number: 68726-1-Ig



## Basic Information

<b>Catalog Number:</b> 68726-1-Ig	<b>GenBank Accession Number:</b> BC017469	<b>Purification Method:</b> Protein A purification
<b>Size:</b> 150ul , Concentration: 1000 ug/ml by Nanodrop;	<b>GeneID (NCBI):</b> 8907	<b>CloneNo.:</b> 1E9A11
<b>Source:</b> Mouse	<b>UNIPROT ID:</b> Q9BX55	<b>Recommended Dilutions:</b> WB 1:5000-1:50000 IF/ICC 1:200-1:800
<b>Isotype:</b> IgG1	<b>Full Name:</b> adaptor-related protein complex 1, mu 1 subunit	
<b>Immunogen Catalog Number:</b> AG25303	<b>Calculated MW:</b> 423 aa, 49 kDa	
	<b>Observed MW:</b> 47-49 kDa	

## Applications

<b>Tested Applications:</b> WB, IF/ICC, ELISA	<b>Positive Controls:</b>
<b>Species Specificity:</b> human, mouse	<b>WB :</b> MDA-MB-231 cells, A375 cells, NIH/3T3 cells, human placenta tissue, LNCaP cells, HEK-293 cells, Jurkat cells
	<b>IF/ICC :</b> HeLa cells,

## Background Information

AP1M1, also named as CLTNM, Mu-adaptin 1 and Clathrin coat assembly protein AP47, belongs to the adaptor complexes medium subunit family. It is a subunit of clathrin-associated adaptor protein complex 1 that plays a role in protein sorting in the trans-Golgi network (TGN) and endosomes. The AP complexes mediate the recruitment of clathrin to membranes and the recognition of sorting signals within the cytosolic tails of transmembrane cargo molecules.

## Storage

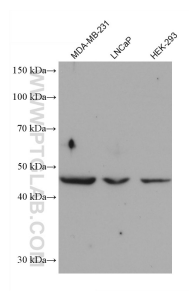
**Storage:**  
Store at -20°C. Stable for one year after shipment.  
**Storage Buffer:**  
PBS with 0.02% sodium azide and 50% glycerol pH 7.3.  
**Aliquoting is unnecessary for -20°C storage**

\*\*\* 20ul sizes contain 0.1% BSA

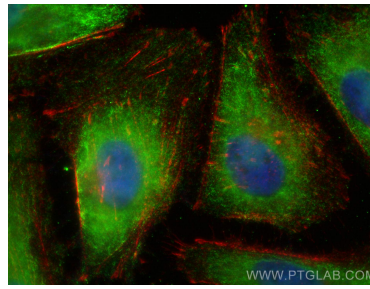
For technical support and original validation data for this product please contact:  
T: 1 (888) 4PTGLAB (1-888-478-4522) (toll free in USA), or 1(312) 455-8498 (outside USA)  
E: [proteintech@ptglab.com](mailto:proteintech@ptglab.com)  
W: [ptglab.com](http://ptglab.com)

This product is exclusively available under Proteintech Group brand and is not available to purchase from any other manufacturer.

## Selected Validation Data



Various lysates were subjected to SDS PAGE followed by western blot with 68726-1-Ig (AP1M1 antibody) at dilution of 1:10000 incubated at room temperature for 1.5 hours.



Immunofluorescent analysis of (-20°C Ethanol) fixed HeLa cells using AP1M1 antibody (68726-1-Ig, Clone: 1E9A11 ) at dilution of 1:400 and Multi-rAb CoraLite® Plus 488-Goat Anti-Mouse Recombinant Secondary Antibody (H+L) (RGAM002).