

For Research Use Only

ATP1A1 Monoclonal antibody, PBS Only (Detector)



Catalog Number: 68735-2-PBS

Basic Information

Catalog Number: 68735-2-PBS	GenBank Accession Number: BC050359	Purification Method: Protein A purification
Size: 100ug , Concentration: 1mg/ml by Nanodrop;	GeneID (NCBI): 476	CloneNo.: 1E9B7
Source: Mouse	ENSEMBL Gene ID: ENSG00000163399	
Isotype: IgG2a	UNIPROT ID: P05023	
Immunogen Catalog Number: AG5990	Full Name: ATPase, Na ⁺ /K ⁺ transporting, alpha 1 polypeptide	
	Calculated MW: 113 kDa	

Applications

Tested Applications:
WB, IF, IHC, Sandwich ELISA, Indirect ELISA

Species Specificity:
Human

Product Information

68735-2-PBS targets ATP1A1 as part of a matched antibody pair:

MP50088-1: 68735-1-PBS capture and 68735-2-PBS detection (validated in Sandwich ELISA)

Unconjugated mouse monoclonal antibody pair in PBS only (BSA and azide free) storage buffer at a concentration of 1 mg/mL, ready for conjugation.

This conjugation ready format makes antibodies ideal for use in many applications including: ELISAs, multiplex assays requiring matched pairs, mass cytometry, and multiplex imaging applications. Antibody use should be optimized by the end user for each application and assay.

Storage

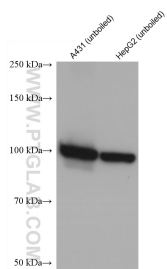
Storage:
Store at -80°C.

Storage Buffer:
PBS Only

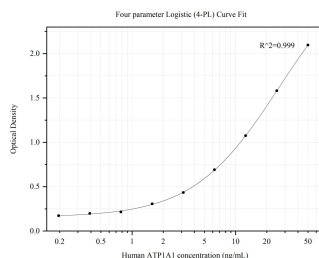
For technical support and original validation data for this product please contact:
T: 1 (888) 4PTGLAB (1-888-478-4522) (toll free in USA), or 1(312) 455-8498 (outside USA)
E: proteintech@ptglab.com
W: ptglab.com

This product is exclusively available under Proteintech Group brand and is not available to purchase from any other manufacturer.

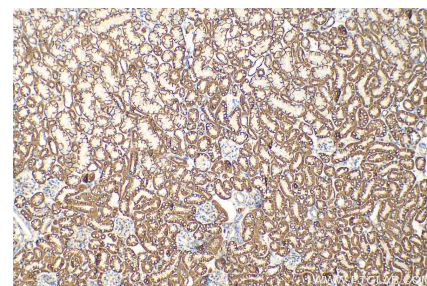
Selected Validation Data



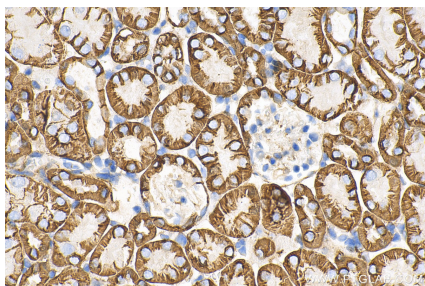
Various lysates were subjected to SDS PAGE followed by western blot with 68735-2-Ig (ATP1A1 antibody) at dilution of 1:10000 incubated at room temperature for 1.5 hours. This data was developed using the same antibody clone with 68735-2-PBS in a different storage buffer formulation.



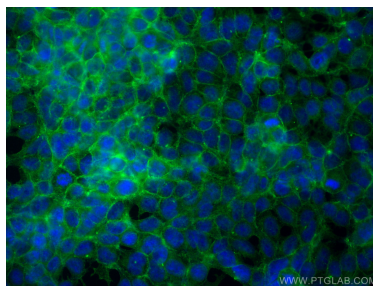
Sandwich ELISA standard curve of MP50088-1, ATP1A1 Monoclonal Matched Antibody Pair, PBS Only. Capture antibody: 68735-1-PBS. Detection antibody: HRP-conjugated 68735-2-PBS. Standard: Ag5990. Range: 0.195-50 ng/mL.



Immunohistochemical analysis of paraffin-embedded mouse kidney tissue slide using 68735-2-Ig (ATP1A1 antibody) at dilution of 1:2000 (under 10x lens). Heat mediated antigen retrieval with Tris-EDTA buffer (pH 9.0). This data was developed using the same antibody clone with 68735-2-PBS in a different storage buffer formulation.



Immunohistochemical analysis of paraffin-embedded mouse kidney tissue slide using 68735-2-Ig (ATP1A1 antibody) at dilution of 1:2000 (under 40x lens). Heat mediated antigen retrieval with Tris-EDTA buffer (pH 9.0). This data was developed using the same antibody clone with 68735-2-PBS in a different storage buffer formulation.



Immunofluorescent analysis of (-20°C Ethanol) fixed HEK-293 cells using ATP1A1 antibody (68735-2-Ig, Clone: 1E9B7) at dilution of 1:800 and Coralite® 488-Conjugated AffiniPure Goat Anti-Mouse IgG(H+L) (SA00013-1). This data was developed using the same antibody clone with 68735-2-PBS in a different storage buffer formulation.