

For Research Use Only

# CXCL8/IL-8 Monoclonal antibody, PBS Only (Capture)

Catalog Number: 68744-1-PBS



## Basic Information

<b>Catalog Number:</b> 68744-1-PBS	<b>GenBank Accession Number:</b> BC013615	<b>Purification Method:</b> Protein G purification
<b>Size:</b> 100ug , Concentration: 1 mg/ml by Nanodrop;	<b>GeneID (NCBI):</b> 3576	<b>CloneNo.:</b> 1A6C6
<b>Source:</b> Mouse	<b>ENSEMBL Gene ID:</b> ENSG00000169429	
<b>Isotype:</b> IgG1	<b>UNIPROT ID:</b> P10145	
<b>Immunogen Catalog Number:</b> HZ-1318	<b>Full Name:</b> interleukin 8	
	<b>Calculated MW:</b> 99 aa, 11 kDa	

## Applications

**Tested Applications:**  
Sandwich ELISA, Indirect ELISA, Sample test

**Species Specificity:**  
human

## Product Information

68744-1-PBS targets CXCL8/IL-8 as part of a matched antibody pair:

MP50089-1: 68744-1-PBS capture and 60141-2-PBS detection (validated in Sandwich ELISA)

Unconjugated mouse monoclonal antibody pair in PBS only (BSA and azide free) storage buffer at a concentration of 1 mg/mL, ready for conjugation.

This conjugation ready format makes antibodies ideal for use in many applications including: ELISAs, multiplex assays requiring matched pairs, mass cytometry, and multiplex imaging applications. Antibody use should be optimized by the end user for each application and assay.

## Storage

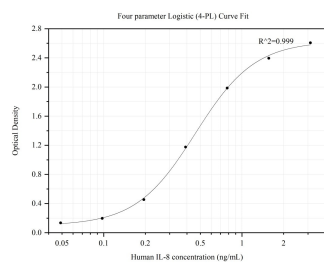
**Storage:**  
Store at -80°C.

**Storage Buffer:**  
PBS Only

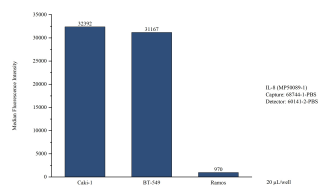
For technical support and original validation data for this product please contact:  
T: 1 (888) 4PTGLAB (1-888-478-4522) (toll free in USA), or 1(312) 455-8498 (outside USA)  
E: [proteintech@ptglab.com](mailto:proteintech@ptglab.com)  
W: [ptglab.com](http://ptglab.com)

This product is exclusively available under Proteintech Group brand and is not available to purchase from any other manufacturer.

## Selected Validation Data



Sandwich ELISA standard curve of MP50089-1, CXCL8/IL-8 Monoclonal Matched Antibody Pair, PBS Only. Capture antibody: 68744-1-PBS. Detection antibody: HRP-conjugated 60141-2-PBS. Standard: HZ-1318. Range: 0.049-3.125 ng/mL.



Cytometric bead array of cell line supernatant using MP50089-1, CXCL8/IL-8 Monoclonal Matched Antibody Pair, PBS Only. Capture antibody: 68744-1-PBS. Detection antibody: 60141-2-PBS. Supernatant (20µL/well) from the following cell lines were assayed: Caki-1, BT-549, Ramos.