

For Research Use Only

GDF-15 Monoclonal antibody

Catalog Number: 68768-1-Ig



Basic Information

| | | |
|--|---|--|
| Catalog Number: 68768-1-Ig | GenBank Accession Number: BC008962 | Purification Method: Protein G purification |
| Size: 150ul , Concentration: 1000 ug/ml by Nanodrop; | GeneID (NCBI): 9518 | CloneNo.: 1B1H4 |
| Source: Mouse | UNIPROT ID: Q99988 | Recommended Dilutions: WB 1:5000-1:50000 IHC 1:500-1:2000 IF/ICC 1:200-1:800 |
| Isotype: IgG1 | Full Name: growth differentiation factor 15 | |
| Immunogen Catalog Number: AG33750 | Calculated MW: 34 kDa | |
| | Observed MW: 34 kDa | |

Applications

Tested Applications:
WB, IHC, IF/ICC, ELISA

Species Specificity:
human

Note-IHC: suggested antigen retrieval with TE buffer pH 9.0; (*) Alternatively, antigen retrieval may be performed with citrate buffer pH 6.0

Positive Controls:

WB : K-562 cells, Caki-1 cells, HepG2 cells, LNCaP cells, HT-29 cells, human placenta tissue

IHC : human placenta tissue,

IF/ICC : HeLa cells,

Background Information

Growth differentiation factor 15 (GDF15), also known as macrophage inhibitory cytokine-1 (MIC-1), is a protein of the transforming growth factor beta (TGFb) superfamily that regulates inflammatory and apoptotic pathways in injured tissues and during disease processes. GDF15 is a stress-induced cytokine and associated with hypoxia, inflammation and oxidative stress, it is also released from endothelial cells after stimulation with pro-inflammatory cytokines. GDF15 has been suggested as a target and biomarker for cardiovascular disease as it plays a cardioprotective role in the adult heart. GDF15 is highly expressed in the placenta. GDF15 is known to be involved in human embryo development and necessary for the maintenance of pregnancy. GDF15 is also produced by adipocytes in response to oxidative stress, a well-known factor associated with preeclampsia.

Storage

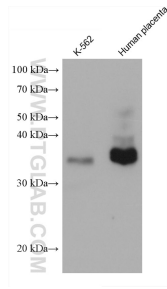
Storage:
Store at -20°C. Stable for one year after shipment.
Storage Buffer:
PBS with 0.02% sodium azide and 50% glycerol, pH7.3
Aliquoting is unnecessary for -20°C storage

*** 20ul sizes contain 0.1% BSA

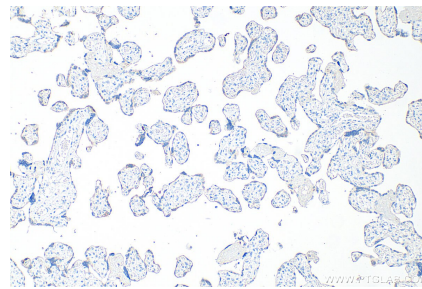
For technical support and original validation data for this product please contact:
T: 1 (888) 4PTGLAB (1-888-478-4522) (toll free in USA), or 1(312) 455-8498 (outside USA)
E: proteintech@ptglab.com
W: ptglab.com

This product is exclusively available under Proteintech Group brand and is not available to purchase from any other manufacturer.

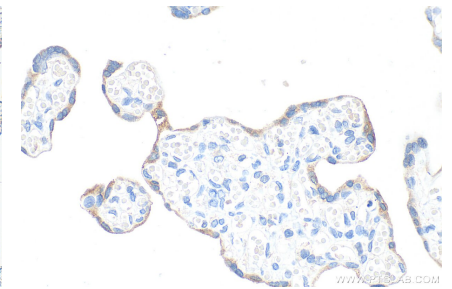
Selected Validation Data



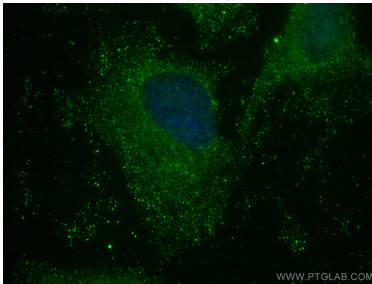
Various lysates were subjected to SDS PAGE followed by western blot with 68768-1-Ig (GDF15 antibody) at dilution of 1:20000 incubated at room temperature for 1.5 hours.



Immunohistochemical analysis of paraffin-embedded human placenta tissue slide using 68768-1-Ig (GDF-15 antibody) at dilution of 1:1000 (under 10x lens). Heat mediated antigen retrieval with Tris-EDTA buffer (pH 9.0).



Immunohistochemical analysis of paraffin-embedded human placenta tissue slide using 68768-1-Ig (GDF-15 antibody) at dilution of 1:1000 (under 40x lens). Heat mediated antigen retrieval with Tris-EDTA buffer (pH 9.0).



Immunofluorescent analysis of (-20°C Ethanol) fixed HeLa cells using GDF15 antibody (68768-1-Ig, Clone: 1B1H4) at dilution of 1:400 and Multi-rAb CoraLite® Plus 488-Goat Anti-Mouse Recombinant Secondary Antibody (H+L) (RGAM002).