

For Research Use Only

CALCA/Calcitonin Monoclonal antibody, PBS Only (Capture)

Catalog Number: 68774-1-PBS



Basic Information

Catalog Number: 68774-1-PBS	GenBank Accession Number: BC093753	Purification Method: Protein A purification
Size: 100ug , Concentration: 1000 µg/ml by 796 Nanodrop;	GeneID (NCBI): UNIPROT ID: P01258	CloneNo.: 1A12A1
Source: Mouse	Full Name: Calcitonin	
Isotype: IgG1	Calculated MW: 141 aa, 15 kDa	
Immunogen Catalog Number: AG26141	Observed MW: 14 kDa	

Applications

Tested Applications:
WB, IHC, Cytometric bead array, Indirect ELISA,
Sample test

Species Specificity:
human

Product Information

68774-1-PBS targets CALCA/Calcitonin as part of a matched antibody pair:

MP50293-1: 68774-1-PBS capture and 68774-2-PBS detection (validated in Cytometric bead array)

Unconjugated mouse monoclonal antibody pair in PBS only (BSA and azide free) storage buffer at a concentration of 1 mg/mL, ready for conjugation.

This conjugation ready format makes antibodies ideal for use in many applications including: ELISAs, multiplex assays requiring matched pairs, mass cytometry, and multiplex imaging applications. Antibody use should be optimized by the end user for each application and assay.

Background Information

Calcitonin is a peptide hormone consisting of 32 amino acids, primarily synthesized by the parafollicular cells (C cells) of the human thyroid gland. It plays a crucial role in regulating calcium levels in the blood by decreasing them. Calcitonin opposes the actions of parathyroid hormone, which increases blood calcium levels. Calcitonin works through a G protein-coupled receptor, known as the calcitonin receptor, which predominantly transmits signals via the cAMP and PLC/IP3 pathways. Its primary physiological effects are on osteoclasts and the tubular epithelium of kidneys.

Storage

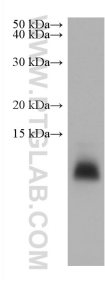
Storage:
Store at -80°C.

Storage Buffer:
PBS Only

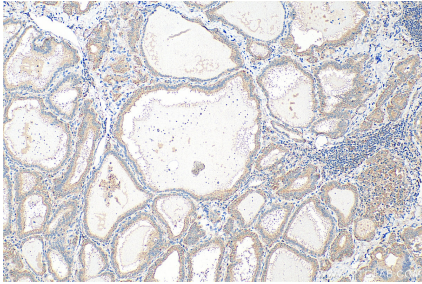
For technical support and original validation data for this product please contact:
T: 1 (888) 4PTGLAB (1-888-478-4522) (toll free in USA), or 1(312) 455-8498 (outside USA)
E: proteintech@ptglab.com
W: ptglab.com

This product is exclusively available under Proteintech Group brand and is not available to purchase from any other manufacturer.

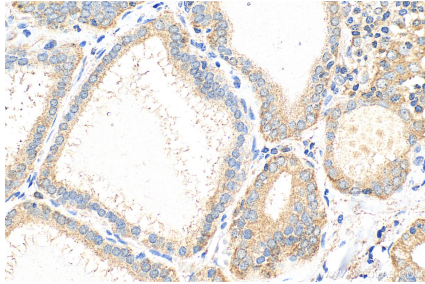
Selected Validation Data



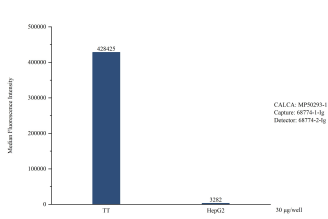
TT cells were subjected to SDS PAGE followed by western blot with 68774-1-Ig (CALCA/CGRP antibody) at dilution of 1:5000 incubated at room temperature for 1.5 hours. This data was developed using the same antibody clone with 68774-1-PBS in a different storage buffer formulation.



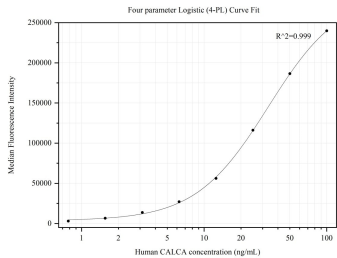
Immunohistochemical analysis of paraffin-embedded human thyroid cancer tissue slide using 68774-1-Ig (CALCA/CGRP antibody) at dilution of 1:1000 (under 10x lens). Heat mediated antigen retrieval with Tris-EDTA buffer (pH 9.0). This data was developed using the same antibody clone with 68774-1-PBS in a different storage buffer formulation.



Immunohistochemical analysis of paraffin-embedded human thyroid cancer tissue slide using 68774-1-Ig (CALCA/CGRP antibody) at dilution of 1:1000 (under 40x lens). Heat mediated antigen retrieval with Tris-EDTA buffer (pH 9.0). This data was developed using the same antibody clone with 68774-1-PBS in a different storage buffer formulation.



Cytometric bead array in cell lysate using MP50293-1, CALCA Monoclonal Matched Antibody Pair, PBS Only. Capture antibody: 68774-1-PBS. Detection antibody: 68774-2-PBS. Cell lysate: TT, HepG2.



Cytometric bead array standard curve of MP50293-1, CALCA Monoclonal Matched Antibody Pair, PBS Only. Capture antibody: 68774-1-PBS. Detection antibody: 68774-2-PBS. Standard:Ag26141. Range: 0.781-100 ng/mL.