

For Research Use Only

RNASEH1 Monoclonal antibody

Catalog Number: 68787-3-Ig



Basic Information

Catalog Number:

68787-3-Ig

Size:

150ul, Concentration: 1000 ug/ml by Nanodrop;

Source:

Mouse

Isotype:

IgG1

Immunogen Catalog Number:

AG33948

GenBank Accession Number:

BC002973

GeneID (NCBI):

246243

UNIPROT ID:

O60930

Full Name:

ribonuclease H1

Calculated MW:

32 kDa

Observed MW:

32 kDa

Purification Method:

Protein G purification

CloneNo.:

2C8D3

Recommended Dilutions:

WB 1:5000-1:50000

Applications

Tested Applications:

WB, ELISA

Species Specificity:

human, mouse, rat

Positive Controls:

WB : SK-N-SH cells, 4T1 cells, A549 cells, HeLa cells, HEK-293 cells, Jurkat cells, K-562 cells, HSC-T6 cells

Background Information

Ribonucleases H are enzymes that cleave the RNA of RNA/DNA hybrids that form during replication and repair and which could lead to DNA instability if they were not processed. Eukaryotic RNases H are larger and more complex than their prokaryotic counterparts [PMID:12667461]. Eukaryotic RNase H1 has acquired a Hybrid Binding Domain that confers processivity and affinity for the substrate. Because of its essential role and its similarities in structure and enzymatic mechanism to the RNase H of HIV reverse transcriptase, RNASEH1 has been implicated in mitochondrial DNA replication during mouse development [PMID:19228196].

Storage

Storage:

Store at -20°C. Stable for one year after shipment.

Storage Buffer:

PBS with 0.02% sodium azide and 50% glycerol pH 7.3.

Aliquoting is unnecessary for -20°C storage

*** 20ul sizes contain 0.1% BSA

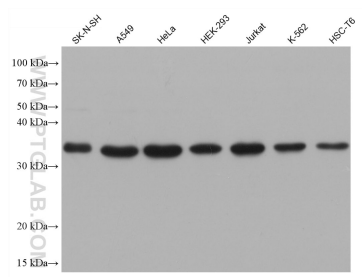
For technical support and original validation data for this product please contact:

T: 1 (888) 4PTGLAB (1-888-478-4522) (toll free in USA), or 1(312) 455-8498 (outside USA)

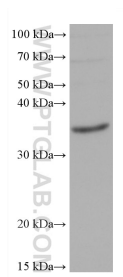
E: proteintech@ptglab.com
W: ptglab.com

This product is exclusively available under Proteintech Group brand and is not available to purchase from any other manufacturer.

Selected Validation Data



Various lysates were subjected to SDS PAGE followed by western blot with 68787-3-Ig (RNASEH1 antibody) at dilution of 1:20000 incubated at room temperature for 1.5 hours.



4T1 cells were subjected to SDS PAGE followed by western blot with 68787-3-Ig (RNASEH1 antibody) at dilution of 1:20000 incubated at room temperature for 1.5 hours.