

For Research Use Only

# CD200R1 Monoclonal antibody, PBS Only (Detector)



Catalog Number: 68796-2-PBS

## Basic Information

**Catalog Number:**

68796-2-PBS

**Size:**

100ug, Concentration: 1 mg/ml by Nanodrop;

**Source:**

Mouse

**Isotype:**

IgG1

**GenBank Accession Number:**

BC069743

**GeneID (NCBI):**

131450

**UNIPROT ID:**

Q8TD46

**Full Name:**

CD200 receptor 1

**Purification Method:**

Protein G Magarose purification

**CloneNo.:**

2E7D1

## Applications

**Tested Applications:**

Indirect ELISA, Cytometric bead array

**Species Specificity:**

Human

## Product Information

68796-2-PBS targets CD200R1 as part of a matched antibody pair:

MP50163-1: 68796-1-PBS capture and 68796-2-PBS detection (validated in Cytometric bead array, Sandwich ELISA)

Unconjugated mouse monoclonal antibody pair in PBS only (BSA and azide free) storage buffer at a concentration of 1 mg/mL, ready for conjugation.

This conjugation ready format makes antibodies ideal for use in many applications including: ELISAs, multiplex assays requiring matched pairs, mass cytometry, and multiplex imaging applications. Antibody use should be optimized by the end user for each application and assay.

## Storage

**Storage:**

Store at -80°C.

**Storage Buffer:**

PBS Only

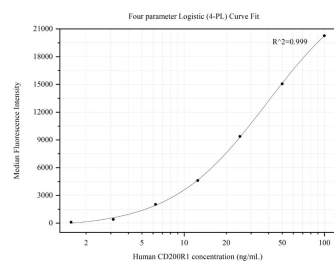
For technical support and original validation data for this product please contact:

T: 1 (888) 4PTGLAB (1-888-478-4522) (toll free in USA), or 1(312) 455-8498 (outside USA)

E: [proteintech@ptglab.com](mailto:proteintech@ptglab.com)  
W: [ptglab.com](http://ptglab.com)

This product is exclusively available under Proteintech Group brand and is not available to purchase from any other manufacturer.

# Selected Validation Data



Cytometric bead array standard curve of MP50163-1, CD200R1 Monoclonal Matched Antibody Pair, PBS Only. Capture antibody: 68796-1-PBS. Detection antibody: 68796-2-PBS. Standard:Eg0011. Range: 1.563-100 ng/mL.