

For Research Use Only

EIF2B1 Monoclonal antibody

Catalog Number: 68824-1-Ig



Basic Information

Catalog Number:

68824-1-Ig

Size:

150ul , Concentration: 1000 ug/ml by Nanodrop;

Source:

Mouse

Isotype:

IgG1

Immunogen Catalog Number:

AG12493

GenBank Accession Number:

BC103763

GeneID (NCBI):

1967

UNIPROT ID:

Q14232

Full Name:

eukaryotic translation initiation factor 2B, subunit 1 alpha, 26kDa

Calculated MW:

305 aa, 34 kDa

Observed MW:

34 kDa

Purification Method:

Protein G purification

CloneNo.:

1H6A3

Recommended Dilutions:

WB 1:5000-1:50000

IF/ICC 1:400-1:1600

Applications

Tested Applications:

WB, IF/ICC, ELISA

Species Specificity:

human, mouse, pig

Positive Controls:

WB : NIH/3T3 cells, U2OS cells, LNCaP cells, HeLa cells, HEK-293 cells, Jurkat cells

IF/ICC : HeLa cells,

Storage

Storage:

Store at -20°C. Stable for one year after shipment.

Storage Buffer:

PBS with 0.02% sodium azide and 50% glycerol pH 7.3.

Aliquoting is unnecessary for -20°C storage

*** 20ul sizes contain 0.1% BSA

For technical support and original validation data for this product please contact:

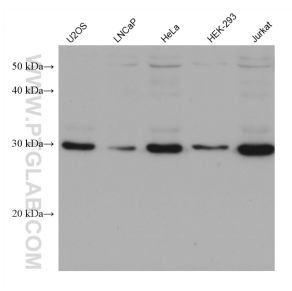
T: 1 (888) 4PTGLAB (1-888-478-4522) (toll free in USA), or 1(312) 455-8498 (outside USA)

E: proteintech@ptglab.com

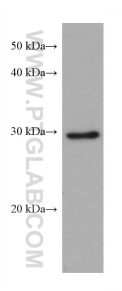
W: ptglab.com

This product is exclusively available under Proteintech Group brand and is not available to purchase from any other manufacturer.

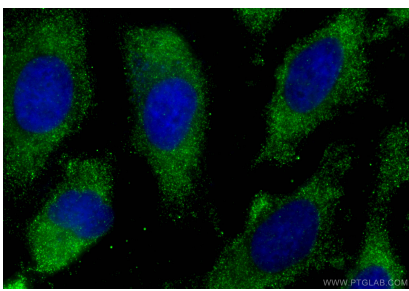
Selected Validation Data



Various lysates were subjected to SDS PAGE followed by western blot with 68824-1-Ig (EIF2B1 antibody) at dilution of 1:20000 incubated at room temperature for 1.5 hours.



NIH/3T3 cells were subjected to SDS PAGE followed by western blot with 68824-1-Ig (EIF2B1 antibody) at dilution of 1:20000 incubated at room temperature for 1.5 hours.



Immunofluorescent analysis of (-20°C Ethanol) fixed HeLa cells using EIF2B1 antibody (68824-1-Ig, Clone: 1H6A3) at dilution of 1:800 and Multi-rAb CoraLite ® Plus 488-Goat Anti-Mouse Recombinant Secondary Antibody (H+L) (RGAM002).