

For Research Use Only

# CPA1 Monoclonal antibody

Catalog Number: 68826-1-Ig



## Basic Information

<b>Catalog Number:</b> 68826-1-Ig	<b>GenBank Accession Number:</b> BC005279	<b>Purification Method:</b> Protein G purification
<b>Size:</b> 150ul , Concentration: 1000 ug/ml by Nanodrop;	<b>GeneID (NCBI):</b> 1357	<b>CloneNo.:</b> 2H2E8
<b>Source:</b> Mouse	<b>UNIPROT ID:</b> P15085	<b>Recommended Dilutions:</b> WB 1:5000-1:50000 IF-P 1:200-1:800
<b>Isotype:</b> IgG1	<b>Full Name:</b> carboxypeptidase A1 (pancreatic)	
<b>Immunogen Catalog Number:</b> AG8579	<b>Calculated MW:</b> 419 aa, 47 kDa	
	<b>Observed MW:</b> 47 kDa	

## Applications

<b>Tested Applications:</b> WB, IF-P, ELISA	<b>Positive Controls:</b>
<b>Species Specificity:</b> human, mouse, rat, pig	<b>WB :</b> pig pancreas tissue, rat pancreas tissue, mouse pancreas tissue
	<b>IF-P :</b> mouse pancreas tissue,

## Background Information

CPA1(Carboxypeptidase A1) is also named as CPA and belongs to the the peptidase M14 family. CPA1 is one of the genes whose expression in the pancreas and the protein which it encodes is synthesized as an inactive precursor, proCPA1, which is processed to the active enzyme by the proteolytic removal of the 95-amino acid N-terminal prodomain. The mature CPA1 is not secreted and is trapped and degraded intracellularly(PMID:8639628). This antibody is speicific to CPA1.

## Storage

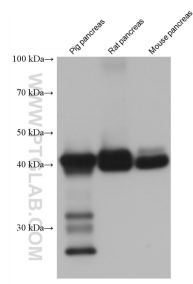
**Storage:**  
Store at -20°C. Stable for one year after shipment.  
**Storage Buffer:**  
PBS with 0.02% sodium azide and 50% glycerol pH 7.3.  
**Aliquoting is unnecessary for -20°C storage**

\*\*\* 20ul sizes contain 0.1% BSA

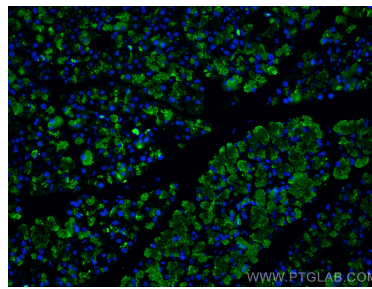
For technical support and original validation data for this product please contact:  
T: 1 (888) 4PTGLAB (1-888-478-4522) (toll free in USA), or 1(312) 455-8498 (outside USA)  
E: [proteintech@ptglab.com](mailto:proteintech@ptglab.com)  
W: [ptglab.com](http://ptglab.com)

This product is exclusively available under Proteintech Group brand and is not available to purchase from any other manufacturer.

## Selected Validation Data



Various lysates were subjected to SDS PAGE followed by western blot with 68826-1-Ig (CPA1 antibody) at dilution of 1:10000 incubated at room temperature for 1.5 hours.



Immunofluorescent analysis of (4% PFA) fixed paraffin-embedded mouse pancreas tissue using CPA1 antibody (68826-1-Ig, Clone: 2H2E8 ) at dilution of 1:400 and CoraLite®488-Conjugated Goat Anti-Mouse IgG(H+L) (SA00013-1). Heat mediated antigen retrieval with Tris-EDTA buffer (pH 9.0).