

For Research Use Only

CORO1C Monoclonal antibody, PBS Only

Catalog Number: 68846-1-PBS



Basic Information

Catalog Number: 68846-1-PBS	GenBank Accession Number: BC002342	Purification Method: Protein A purification
Size: 100ug , Concentration: 1 mg/ml by Nanodrop;	GeneID (NCBI): 23603	CloneNo.: 1B10G4
Source: Mouse	UNIPROT ID: Q9ULV4	
Isotype: IgG2b	Full Name: coronin, actin binding protein, 1C	
Immunogen Catalog Number: AG6546	Calculated MW: 53 kDa	
	Observed MW: 57 kDa	

Applications

Tested Applications:
WB, IF/ICC, ELISA

Species Specificity:
human, mouse, rat

Background Information

CORO1C also known as HCRNN4, belongs to the WD repeat coronin family. CORO1C contains 5 N-terminal trp-asp (WD) repeats and a C-terminal coiled-coil motif. It was reported to regulate actin-dependent processes by assembling F-actin. CORO1C promoted the invasion of breast cancer and glioma cells by specifically promoting the formation of invadopodia(PMID: 30974047).

Storage

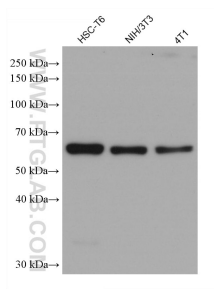
Storage:
Store at -80°C.

Storage Buffer:
PBS Only

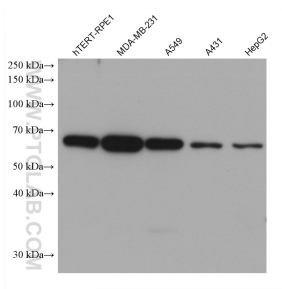
For technical support and original validation data for this product please contact:
T: 1 (888) 4PTGLAB (1-888-478-4522) (toll free in USA), or 1(312) 455-8498 (outside USA)
E: proteintech@ptglab.com
W: ptglab.com

This product is exclusively available under Proteintech Group brand and is not available to purchase from any other manufacturer.

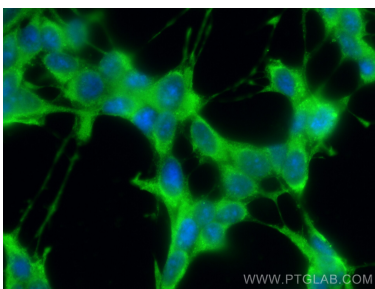
Selected Validation Data



Various lysates were subjected to SDS PAGE followed by western blot with 68846-1-Ig (CORO1C antibody) at dilution of 1:20000 incubated at room temperature for 1.5 hours. This data was developed using the same antibody clone with 68846-1-PBS in a different storage buffer formulation.



Various lysates were subjected to SDS PAGE followed by western blot with 68846-1-Ig (CORO1C antibody) at dilution of 1:20000 incubated at room temperature for 1.5 hours. This data was developed using the same antibody clone with 68846-1-PBS in a different storage buffer formulation.



Immunofluorescent analysis of (-20°C Ethanol) fixed SH-SY5Y cells using CORO1C antibody (68846-1-Ig, Clone: 1B10G4) at dilution of 1:400 and Multi-rAb CoraLite ® Plus 488-Goat Anti-Mouse Recombinant Secondary Antibody (H+L) (RGAM002). This data was developed using the same antibody clone with 68846-1-PBS in a different storage buffer formulation.