

For Research Use Only

ADAR1 Monoclonal antibody, PBS Only (Capture/Detector)

Catalog Number: 68850-2-PBS



Basic Information

| | | |
|---|--|---|
| Catalog Number: 68850-2-PBS | GenBank Accession Number: BC038227 | Purification Method: Protein G purification |
| Size: 100ug , Concentration: 1 mg/ml by Nanodrop; | GeneID (NCBI): 103 | CloneNo.: 3A1C7 |
| Source: Mouse | UNIPROT ID: P55265 | |
| Isotype: IgG1 | Full Name: adenosine deaminase, RNA-specific | |
| Immunogen Catalog Number: AG5609 | Calculated MW: 136 kDa | |

Applications

Tested Applications:
Cytometric bead array, Sandwich ELISA, Indirect ELISA, Sample test

Species Specificity:
human

Product Information

68850-2-PBS targets ADAR1 as part of a matched antibody pair:

MP50240-1: 68850-1-PBS capture and 68850-2-PBS detection (validated in Cytometric bead array)

MP50240-2: 68850-2-PBS capture and 68850-3-PBS detection (validated in Cytometric bead array, Sandwich ELISA)

Unconjugated mouse monoclonal antibody pair in PBS only (BSA and azide free) storage buffer at a concentration of 1 mg/mL, ready for conjugation.

This conjugation ready format makes antibodies ideal for use in many applications including: ELISAs, multiplex assays requiring matched pairs, mass cytometry, and multiplex imaging applications. Antibody use should be optimized by the end user for each application and assay.

Storage

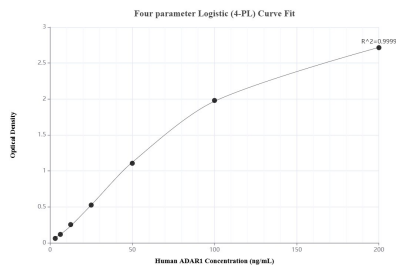
Storage:
Store at -80°C.

Storage Buffer:
PBS Only

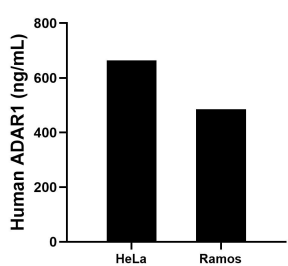
For technical support and original validation data for this product please contact:
T: 1 (888) 4PTGLAB (1-888-478-4522) (toll free in USA), or 1(312) 455-8498 (outside USA)
E: proteintech@ptglab.com
W: ptglab.com

This product is exclusively available under Proteintech Group brand and is not available to purchase from any other manufacturer.

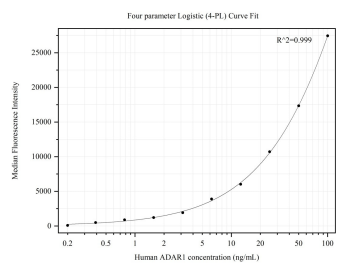
Selected Validation Data



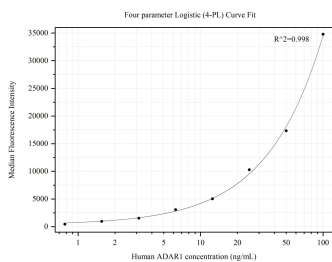
Sandwich ELISA standard curve of MP50240-2, Human ADAR1 Monoclonal Matched Antibody Pair - PBS only. 68850-2-PBS was coated to a plate as the capture antibody and incubated with serial dilutions of standard Ag5609. 68850-3-PBS was HRP conjugated as the detection antibody. Range: 3.13-200 ng/mL



The mean ADAR1 concentration was determined to be 664.42 ng/mL in HeLa cell extract based on a 1.5 mg/mL extract load and 485.52 ng/mL in Ramos cell extract based on a 1.4 mg/mL extract load.



Cytometric bead array standard curve of MP50240-1, ADAR1 Monoclonal Matched Antibody Pair, PBS Only. Capture antibody: 68850-1-PBS. Detection antibody: 68850-2-PBS. Standard:Ag5609. Range: 0.195-100 ng/mL



Cytometric bead array standard curve of MP50240-2, ADAR1 Monoclonal Matched Antibody Pair, PBS Only. Capture antibody: 68850-2-PBS. Detection antibody: 68850-3-PBS. Standard:Ag5609. Range: 0.781-100 ng/mL