

For Research Use Only

PANX1 Monoclonal antibody

Catalog Number: 68873-5-Ig



Basic Information

Catalog Number: 68873-5-Ig	GenBank Accession Number: BC016931	Purification Method: Protein A purification
Size: 150ul , Concentration: 1000 ug/ml by Nanodrop;	GeneID (NCBI): 24145	CloneNo.: 3G4B10
Source: Mouse	UNIPROT ID: Q96RD7	Recommended Dilutions: WB: 1:5000-1:50000
Isotype: IgG2a	Full Name: pannexin 1	
Immunogen Catalog Number: AG33689	Calculated MW: 426 aa, 48 kDa	
	Observed MW: 45-50 kDa	

Applications

Tested Applications: WB, ELISA	Positive Controls: WB : SCaBER cells, MDA-MB-231 cells, HaCaT cells, SH-SY5Y cells, Jurkat cells, K-562 cells
Species Specificity: human, mouse	

Background Information

PANX1, also named as MRS1, belongs to the pannexin family. It plays a role as a Ca²⁺-leak channel to regulate ER Ca²⁺ homeostasis. It is a structural component of the gap junctions and the hemichannels. PANX1 induced the formation of intercellular channels with characteristics of gap junctions. PANX1 is 48-kDa protein which contains 4 transmembrane domains and cytoplasmic N and C termini. It is a mediator of find-me signal/nucleotide release from apoptotic cells.

Storage

Storage:
Store at -20°C. Stable for one year after shipment.
Storage Buffer:
PBS with 0.02% sodium azide and 50% glycerol, pH7.3
Aliquoting is unnecessary for -20°C storage

*** 20ul sizes contain 0.1% BSA

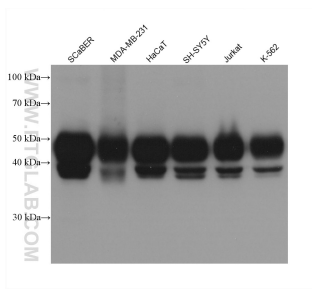
For technical support and original validation data for this product please contact:

T: 1 (888) 4PTGLAB (1-888-478-4522) (toll free in USA), or 1(312) 455-8498 (outside USA)

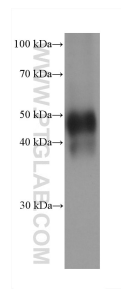
E: proteintech@ptglab.com
W: ptglab.com

This product is exclusively available under Proteintech Group brand and is not available to purchase from any other manufacturer.

Selected Validation Data



Various lysates were subjected to SDS PAGE followed by western blot with 68873-5-Ig (PAX1 antibody) at dilution of 1:20000 incubated at room temperature for 1.5 hours.



Neuro-2a cells were subjected to SDS PAGE followed by western blot with 68873-5-Ig (PAX1 antibody) at dilution of 1:20000 incubated at room temperature for 1.5 hours.