

For Research Use Only

MDH2 Monoclonal antibody

Catalog Number: 68878-1-Ig



Basic Information

Catalog Number: 68878-1-Ig	GenBank Accession Number: BC001917	Purification Method: Protein A purification
Size: 150ul , Concentration: 1000 ug/ml by Nanodrop;	GeneID (NCBI): 4191	CloneNo.: 2A9G11
Source: Mouse	UNIPROT ID: P40926	Recommended Dilutions: WB 1:5000-1:50000
Isotype: IgG2b	Full Name: malate dehydrogenase 2, NAD (mitochondrial)	
Immunogen Catalog Number: AG7750	Calculated MW: 36 kDa	
	Observed MW: 33 kDa	

Applications

Tested Applications: WB, ELISA	Positive Controls:
Species Specificity: human	WB : LNCaP cells, MCF-7 cells, HeLa cells, HEK-293 cells, HepG2 cells, Jurkat cells, K-562 cells

Background Information

MDH2 encodes the Krebs cycle enzyme mitochondrial malate dehydrogenase, which catalyzes the reversible oxidation of malate to oxaloacetate and plays a role in the malate-aspartate NADH shuttle. Mutations in MDH2 Cause Developmental and epileptic encephalopathy 51 (PMID: 27989324).

Storage

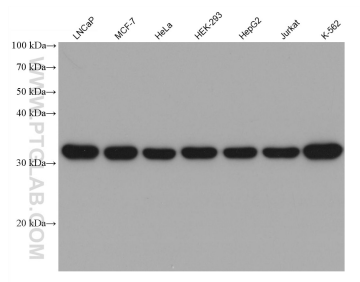
Storage:
Store at -20°C. Stable for one year after shipment.
Storage Buffer:
PBS with 0.02% sodium azide and 50% glycerol pH 7.3.
Aliquoting is unnecessary for -20°C storage

*** 20ul sizes contain 0.1% BSA

For technical support and original validation data for this product please contact:
T: 1 (888) 4PTGLAB (1-888-478-4522) (toll free in USA), or 1(312) 455-8498 (outside USA)
E: proteintech@ptglab.com
W: ptglab.com

This product is exclusively available under Proteintech Group brand and is not available to purchase from any other manufacturer.

Selected Validation Data



Various lysates were subjected to SDS PAGE followed by western blot with 68878-1-Ig (MDH2 antibody) at dilution of 1:20000 incubated at room temperature for 1.5 hours.