

For Research Use Only

# ICT1 Monoclonal antibody

Catalog Number: 68898-3-Ig



## Basic Information

Catalog Number:	68898-3-Ig	GenBank Accession Number:	BC015335	Purification Method:	Protein G purification
Size:	150ul , Concentration: 1000 ug/ml by Nanodrop;	GeneID (NCBI):	3396	CloneNo.:	1F11E6
Source:	Mouse	UNIPROT ID:	Q14197	Recommended Dilutions:	WB 1:5000-1:50000
Isotype:	IgG1	Full Name:	immature colon carcinoma transcript 1		
Immunogen Catalog Number:	AG33109	Calculated MW:	24 kDa		
		Observed MW:	21-24 kDa		

## Applications

Tested Applications:	WB, ELISA	Positive Controls:	WB : HCT 116 cells, Calu-3 cells, SW480 cells, LNCaP cells, HeLa cells, HEK-293 cells, SK-BR-3 cells
Species Specificity:	human		

## Background Information

The adult colon epithelium contains 3 differentiated cell types that arise from a multipotent stem cell. Deviation from the normal maturation pathway by neoplastic transformation is thought to initiate in stem cells or their early descendants. One potential marker is immature colon carcinoma transcript 1 (ICT1, synonym: DS-1) whose mRNA and protein were more highly expressed in undifferentiated than differentiated cells.

## Storage

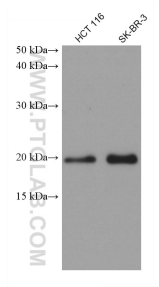
**Storage:**  
Store at -20°C. Stable for one year after shipment.  
**Storage Buffer:**  
PBS with 0.02% sodium azide and 50% glycerol pH 7.3.  
Aliquoting is unnecessary for -20°C storage

\*\*\* 20ul sizes contain 0.1% BSA

For technical support and original validation data for this product please contact:  
T: 1 (888) 4PTGLAB (1-888-478-4522) (toll free in USA), or 1(312) 455-8498 (outside USA)  
E: [proteintech@ptglab.com](mailto:proteintech@ptglab.com)  
W: [ptglab.com](http://ptglab.com)

This product is exclusively available under Proteintech Group brand and is not available to purchase from any other manufacturer.

## Selected Validation Data



Various lysates were subjected to SDS PAGE followed by western blot with 68898-3-Ig (ICT1 antibody) at dilution of 1:10000 incubated at room temperature for 1.5 hours.