

For Research Use Only

RBMS1 Monoclonal antibody

Catalog Number: 68950-5-Ig



Basic Information

Catalog Number: 68950-5-Ig	GenBank Accession Number: BC018951	Purification Method: Protein A purification
Size: 150ul , Concentration: 1000 ug/ml by Nanodrop;	GeneID (NCBI): 5937	CloneNo.: 2F3A4
Source: Mouse	UNIPROT ID: P29558	Recommended Dilutions: WB: 1:5000-1:50000
Isotype: IgG2a	Full Name: RNA binding motif, single stranded interacting protein 1	
Immunogen Catalog Number: AG1493	Calculated MW: 45 kDa	
	Observed MW: 45 kDa	

Applications

Tested Applications: WB, ELISA	Positive Controls: WB : SCaBER cells, MCF-7 cells, HeLa cells, HEK-293 cells, HepG2 cells
Species Specificity: human	

Background Information

RBMS1 (RNA binding motif single stranded interacting protein 1), also known as C2orf12. It is expected to be located in the nucleus, which is ubiquitinated in placenta and endometrium. Highest amounts are found in placenta, lung and heart. This gene encodes a member of a small family of proteins which bind single stranded DNA/RNA. These proteins are characterized by the presence of two sets of ribonucleoprotein consensus sequence (RNP-CS) that contain conserved motifs, RNP1 and RNP2, originally described in RNA binding proteins, and required for DNA binding. These proteins have been implicated in such diverse functions as DNA replication, gene transcription, cell cycle progression and apoptosis. The molecular weight of RBMS1 is 45 kDa.

Storage

Storage:
Store at -20°C. Stable for one year after shipment.
Storage Buffer:
PBS with 0.02% sodium azide and 50% glycerol, pH7.3
Aliquoting is unnecessary for -20°C storage

*** 20ul sizes contain 0.1% BSA

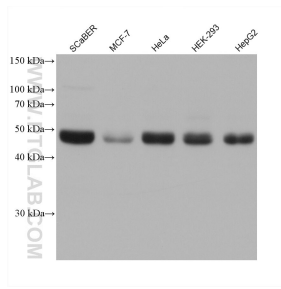
For technical support and original validation data for this product please contact:

T: 1 (888) 4PTGLAB (1-888-478-4522) (toll free in USA), or 1(312) 455-8498 (outside USA)

E: proteintech@ptglab.com
W: ptglab.com

This product is exclusively available under Proteintech Group brand and is not available to purchase from any other manufacturer.

Selected Validation Data



Various lysates were subjected to SDS PAGE followed by western blot with 68950-5-Ig (RBMS1 antibody) at dilution of 1:10000 incubated at room temperature for 1.5 hours.