

For Research Use Only

# RBMS1 Monoclonal antibody, PBS Only

Catalog Number: 68950-5-PBS



## Basic Information

<b>Catalog Number:</b> 68950-5-PBS	<b>GenBank Accession Number:</b> BC018951	<b>Purification Method:</b> Protein A purification
<b>Size:</b> 100ug , Concentration: 1 mg/ml by Nanodrop;	<b>GeneID (NCBI):</b> 5937	<b>CloneNo.:</b> 2F3A4
<b>Source:</b> Mouse	<b>UNIPROT ID:</b> P29558	
<b>Isotype:</b> IgG2a	<b>Full Name:</b> RNA binding motif, single stranded interacting protein 1	
<b>Immunogen Catalog Number:</b> AG1493	<b>Calculated MW:</b> 45 kDa	
	<b>Observed MW:</b> 45 kDa	

## Applications

**Tested Applications:**  
WB, Indirect ELISA

**Species Specificity:**  
human

## Background Information

RBMS1 (RNA binding motif single stranded interacting protein 1), also known as C2orf12. It is expected to be located in the nucleus, which is ubiquitinated in placenta and endometrium. Highest amounts are found in placenta, lung and heart. This gene encodes a member of a small family of proteins which bind single stranded DNA/RNA. These proteins are characterized by the presence of two sets of ribonucleoprotein consensus sequence (RNP-CS) that contain conserved motifs, RNP1 and RNP2, originally described in RNA binding proteins, and required for DNA binding. These proteins have been implicated in such diverse functions as DNA replication, gene transcription, cell cycle progression and apoptosis. The molecular weight of RBMS1 is 45 kDa.

## Storage

**Storage:**  
Store at -80°C.

**Storage Buffer:**  
PBS only, pH7.3

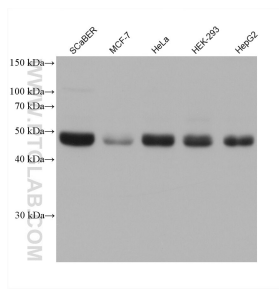
For technical support and original validation data for this product please contact:

T: 1 (888) 4PTGLAB (1-888-478-4522) (toll free in USA), or 1(312) 455-8498 (outside USA)

E: [proteintech@ptglab.com](mailto:proteintech@ptglab.com)  
W: [ptglab.com](http://ptglab.com)

**This product is exclusively available under Proteintech Group brand and is not available to purchase from any other manufacturer.**

## Selected Validation Data



Various lysates were subjected to SDS PAGE followed by western blot with 68950-5-Ig (RBMS1 antibody) at dilution of 1:10000 incubated at room temperature for 1.5 hours. This data was developed using the same antibody clone with 68950-5-PBS in a different storage buffer formulation.