

For Research Use Only

TBX1 Monoclonal antibody, PBS Only (Capture)

Catalog Number: 68951-5-PBS



Basic Information

Catalog Number: 68951-5-PBS	GenBank Accession Number: NM_005992	Purification Method: Protein A Magarose purification
Size: 100ug , Concentration: 1 mg/ml by Nanodrop;	GeneID (NCBI): 6899	CloneNo.: 2C11C6
Source: Mouse	UNIPROT ID: O43435	
Isotype: IgG2a	Full Name: T-box 1	
Immunogen Catalog Number: AG26792	Calculated MW: 43 kDa	

Applications

Tested Applications:
Cytometric bead array, Indirect ELISA

Species Specificity:
human

Product Information

68951-5-PBS targets TBX1 as part of a matched antibody pair.

MP50397-3: 68951-5-PBS capture and 68951-6-PBS detection (validated in Cytometric bead array)

Unconjugated mouse monoclonal antibody pair in PBS only (BSA and azide free) storage buffer at a concentration of 1 mg/mL, ready for conjugation.

This conjugation ready format makes antibodies ideal for use in many applications including: ELISAs, multiplex assays requiring matched pairs, mass cytometry, and multiplex imaging applications. Antibody use should be optimized by the end user for each application and assay.

Storage

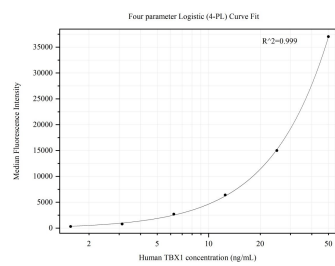
Storage:
Store at -80°C.

Storage Buffer:
PBS Only

For technical support and original validation data for this product please contact:
T: 1 (888) 4PTGLAB (1-888-478-4522) (toll free in USA), or 1(312) 455-8498 (outside USA)
E: proteintech@ptglab.com
W: ptglab.com

This product is exclusively available under Proteintech Group brand and is not available to purchase from any other manufacturer.

Selected Validation Data



Cytometric bead array standard curve of MP50397-3, TBX1 Monoclonal Matched Antibody Pair, PBS Only. Capture antibody: 68951-5-PBS. Detection antibody: 68951-6-PBS. Standard:Ag26792. Range: 1.563-50 ng/mL