

For Research Use Only

# NDEL1 Monoclonal antibody

Catalog Number: 68954-1-Ig



## Basic Information

<b>Catalog Number:</b> 68954-1-Ig	<b>GenBank Accession Number:</b> BC026101	<b>Purification Method:</b> Protein A purification
<b>Size:</b> 150ul , Concentration: 1000 ug/ml by Nanodrop;	<b>GeneID (NCBI):</b> 81565	<b>CloneNo.:</b> 1B3E9
<b>Source:</b> Mouse	<b>UNIPROT ID:</b> Q9GZM8	<b>Recommended Dilutions:</b> WB 1:5000-1:50000
<b>Isotype:</b> IgG2b	<b>Full Name:</b> nudE nuclear distribution gene E homolog (A. nidulans)-like 1	
<b>Immunogen Catalog Number:</b> AG11197	<b>Calculated MW:</b> 345 aa, 38 kDa, 41 kDa	
	<b>Observed MW:</b> 38-42 kDa	

## Applications

<b>Tested Applications:</b> WB, ELISA	<b>Positive Controls:</b>
<b>Species Specificity:</b> human, mouse, rat, pig	<b>WB :</b> LNCaP cells, HeLa cells, HEK-293 cells, HepG2 cells, Jurkat cells, K-562 cells, HSC-T6 cells, NIH/3T3 cells, pig brain tissue

## Background Information

Nuclear distribution factor E-homolog 1 (NDE1), NDE-like 1 (NDEL1), and Lissencephaly 1 (LIS1) together involve in essential neurodevelopmental processes, including neuronal precursor proliferation and differentiation, neurite outgrowth, and neuronal migration. All three bind directly to Disrupted in Schizophrenia 1 (DISC1), a scaffold protein critical to neuronal proliferation, integration, migration, and synaptic function within the developing and adult brain.[PMID: 18469341] Nuclear distribution element-like 1 (NDEL1) was firstly identified as a regulator of the cytoskeleton in microtubule and intermediate filament dynamics and microtubule-based transport [PMID:21948775]. It is required for organization of the cellular microtubule array and microtubule anchoring at the centrosome, which is in part by targeting the microtubule severing protein KATNA1 to the centrosome[PMID:15728732].

## Storage

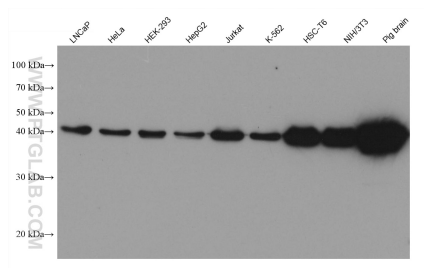
**Storage:**  
Store at -20°C. Stable for one year after shipment.  
**Storage Buffer:**  
PBS with 0.02% sodium azide and 50% glycerol pH 7.3.  
**Aliquoting is unnecessary for -20°C storage**

\*\*\* 20ul sizes contain 0.1% BSA

For technical support and original validation data for this product please contact:  
T: 1 (888) 4PTGLAB (1-888-478-4522) (toll free in USA), or 1(312) 455-8498 (outside USA)  
E: proteintech@ptglab.com  
W: ptglab.com

This product is exclusively available under Proteintech Group brand and is not available to purchase from any other manufacturer.

## Selected Validation Data



Various lysates were subjected to SDS PAGE followed by western blot with 68954-1-Ig (NDEL1 antibody) at dilution of 1:20000 incubated at room temperature for 1.5 hours.