

For Research Use Only

# PPIF Monoclonal antibody, PBS Only (Capture/Detector)

Catalog Number: 68956-3-PBS



## Basic Information

<b>Catalog Number:</b> 68956-3-PBS	<b>GenBank Accession Number:</b> BC005020	<b>Purification Method:</b> Protein G purification
<b>Size:</b> 100ug, Concentration: 1 mg/ml by Nanodrop;	<b>GeneID (NCBI):</b> 10105	<b>CloneNo.:</b> 3A12B5
<b>Source:</b> Mouse	<b>UNIPROT ID:</b> P30405	
<b>Isotype:</b> IgG1	<b>Full Name:</b> peptidylprolyl isomerase F	
<b>Immunogen Catalog Number:</b> AG13151	<b>Calculated MW:</b> 22 kDa	

## Applications

**Tested Applications:**  
Cytometric bead array, Sandwich ELISA, Indirect ELISA,  
Sample test

**Species Specificity:**  
human

## Product Information

68956-3-PBS targets PPIF as part of a matched antibody pair:

MP50406-2: 68956-3-PBS capture and 68956-4-PBS detection (validated in Cytometric bead array, Sandwich ELISA)

MP50406-3: 68956-5-PBS capture and 68956-3-PBS detection (validated in Cytometric bead array)

Unconjugated mouse monoclonal antibody pair in PBS only (BSA and azide free) storage buffer at a concentration of 1 mg/mL, ready for conjugation.

This conjugation ready format makes antibodies ideal for use in many applications including: ELISAs, multiplex assays requiring matched pairs, mass cytometry, and multiplex imaging applications. Antibody use should be optimized by the end user for each application and assay.

## Storage

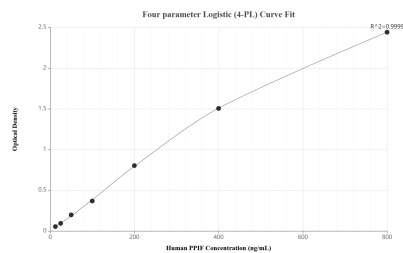
**Storage:**  
Store at -80°C.

**Storage Buffer:**  
PBS only, pH7.3

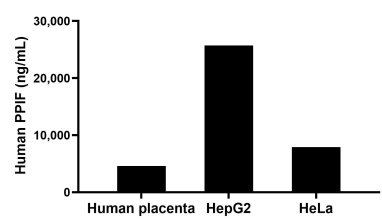
For technical support and original validation data for this product please contact:  
T: 1 (888) 4PTGLAB (1-888-478-4522) (toll free in USA), or 1(312) 455-8498 (outside USA)  
E: [proteintech@ptglab.com](mailto:proteintech@ptglab.com)  
W: [ptglab.com](http://ptglab.com)

This product is exclusively available under Proteintech Group brand and is not available to purchase from any other manufacturer.

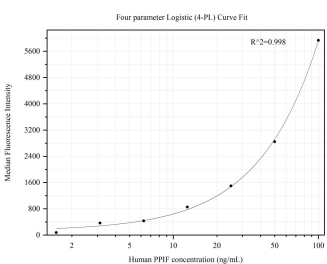
## Selected Validation Data



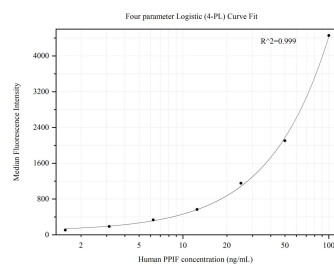
Sandwich ELISA standard curve of MP50406-2, Human PPIF Monoclonal Matched Antibody Pair - PBS only. 68956-3-PBS was coated to a plate as the capture antibody and incubated with serial dilutions of standard Ag13151. 68956-4-PBS was HRP conjugated as the detection antibody. Range: 12.5-800 ng/mL



The mean PPIF concentration was determined to be 4,606.00 ng/mL in human placenta tissue extract based on a 1.30 mg/mL extract load, 25,711.00 ng/mL in HepG2 cell extract based on a 1.80 mg/mL extract load and 7,896.00 ng/mL in HeLa cell extract based on a 1.50 mg/mL extract load.



Cytofluorimetric bead array standard curve of MP50406-2, PPIF-Specific Monoclonal Matched Antibody Pair, PBS Only. Capture antibody: 68956-3-PBS. Detection antibody: 68956-4-PBS. Standard:Ag13151. Range: 1.563-100 ng/mL



Cytofluorimetric bead array standard curve of MP50406-3, PPIF-Specific Monoclonal Matched Antibody Pair, PBS Only. Capture antibody: 68956-5-PBS. Detection antibody: 68956-3-PBS. Standard:Ag13151. Range: 1.563-100 ng/mL