

For Research Use Only

MLXIP Monoclonal antibody

Catalog Number: 68977-1-Ig



Basic Information

Catalog Number: 68977-1-Ig	GenBank Accession Number: BC039704	Purification Method: Protein A purification
Size: 150ul , Concentration: 1000 ug/ml by Nanodrop;	GeneID (NCBI): 22877	CloneNo.: 2E11A4
Source: Mouse	UNIPROT ID: Q9HAP2	Recommended Dilutions: WB 1:5000-1:50000
Isotype: IgG2b	Full Name: MLX interacting protein	
Immunogen Catalog Number: AG4519	Calculated MW: 919 aa, 100 kDa	
	Observed MW: 130 kDa	

Applications

Tested Applications: WB, ELISA	Positive Controls: WB : ACHN cells, A549 cells, HEK-293 cells, Jurkat cells, K-562 cells, Mo7e cells
Species Specificity: human	

Background Information

Mlx-interacting protein(MLXIP), after forming heterodimers with MLX, can bind to and then activate transcription from CACGTG E boxes. The N terminus of MLXIP acts as a CRM1-dependent nuclear export signal and contribute to the cytoplasmic localization of the complex, and as a binding site for 13 protein. the C terminus contains a cytoplasmic localization signal and mediates protein-protein interaction of MONDOA and MLX. The complex play a role in transcriptional activation of glycolytic target genes and glucose-responsive gene regulation. This antibody could recognize isoform1(~110kd) and isoform3(~69kd) of MLXIP. A prominent and specific MLXIP of approximately 130 kDa was detected. It demonstrates that MLXIP associated specifically with Mlx in the cytoplasm (PMID: 11073985).

Storage

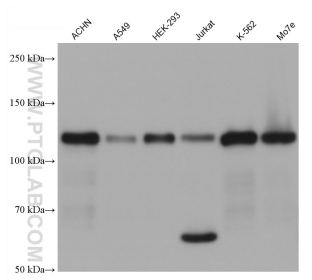
Storage:
Store at -20°C. Stable for one year after shipment.
Storage Buffer:
PBS with 0.02% sodium azide and 50% glycerol pH 7.3.
Aliquoting is unnecessary for -20°C storage

*** 20ul sizes contain 0.1% BSA

For technical support and original validation data for this product please contact:
T: 1 (888) 4PTGLAB (1-888-478-4522) (toll free in USA), or 1(312) 455-8498 (outside USA)
E: proteintech@ptglab.com
W: ptglab.com

This product is exclusively available under Proteintech Group brand and is not available to purchase from any other manufacturer.

Selected Validation Data



Various lysates were subjected to SDS PAGE followed by western blot with 68977-1-Ig (MLXIP antibody) at dilution of 1:10000 incubated at room temperature for 1.5 hours.