

For Research Use Only

# LAPTM4B Monoclonal antibody, PBS Only

Catalog Number: 68981-3-PBS



## Basic Information

<b>Catalog Number:</b> 68981-3-PBS	<b>GenBank Accession Number:</b> BC014129	<b>Purification Method:</b> Protein G purification
<b>Size:</b> 100ug , Concentration: 1 mg/ml by Nanodrop;	<b>GeneID (NCBI):</b> 55353	<b>CloneNo.:</b> 2A11H6
<b>Source:</b> Mouse	<b>UNIPROT ID:</b> Q86VI4	
<b>Isotype:</b> IgG1	<b>Full Name:</b> lysosomal protein transmembrane 4 beta	
<b>Immunogen Catalog Number:</b> AG38696	<b>Calculated MW:</b> 41 kDa	
	<b>Observed MW:</b> 35 kDa	

## Applications

**Tested Applications:**  
WB, Indirect ELISA

**Species Specificity:**  
human

## Background Information

LAPTM4B, a novel oncoprotein, is associated with the prognosis of cancer, and may play important roles in the initiation, promotion and metastasis of tumors. It was initially identified as a hepatocellular carcinoma-associated gene, and was recently shown to be up-regulated in various human cancers. Some studies indicated that LAPTM4B may be an useful marker of prognosis in ovarian carcinoma and endometrial cancer. LAPTM4B belongs to the LAPTM4/LAPTM5 transporter family. It has 3 isoforms with molecular masses 41 kDa, 35 kDa and 24 kDa.

## Storage

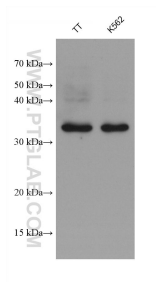
**Storage:**  
Store at -80°C.

**Storage Buffer:**  
PBS Only

For technical support and original validation data for this product please contact:  
T: 1 (888) 4PTGLAB (1-888-478-4522) (toll free in USA), or 1(312) 455-8498 (outside USA)  
E: [proteintech@ptglab.com](mailto:proteintech@ptglab.com)  
W: [ptglab.com](http://ptglab.com)

This product is exclusively available under Proteintech Group brand and is not available to purchase from any other manufacturer.

## Selected Validation Data



Various lysates were subjected to SDS PAGE followed by western blot with 68981-3-Ig (LAPTM4B antibody) at dilution of 1:5000 incubated at room temperature for 1.5 hours. This data was developed using the same antibody clone with 68981-3-PBS in a different storage buffer formulation.