

For Research Use Only

Osteopontin Monoclonal antibody, PBS Only (Capture/Detector)

Catalog Number: 68983-4-PBS



Basic Information

Catalog Number: 68983-4-PBS	GenBank Accession Number: BC007016	Purification Method: Protein G purification
Size: 100ug , Concentration: 1 mg/ml by Nanodrop;	GeneID (NCBI): 6696	CloneNo.: 1B6A1
Source: Mouse	UNIPROT ID: P10451-5	
Isotype: IgG1	Full Name: secreted phosphoprotein 1	
Immunogen Catalog Number: AG19216	Calculated MW: 314 aa, 35 kDa	

Applications

Tested Applications:
Cytometric bead array, Indirect ELISA, Sample test

Species Specificity:
human

Product Information

68983-4-PBS targets Osteopontin as part of a matched antibody pair:

MP50455-2: 68983-3-PBS capture and 68983-4-PBS detection (validated in Cytometric bead array)

MP50455-3: 68983-4-PBS capture and 68983-5-PBS detection (validated in Cytometric bead array)

MP50455-4: 68983-4-PBS capture and 68983-2-PBS detection (validated in Cytometric bead array)

Unconjugated mouse monoclonal antibody pair in PBS only (BSA and azide free) storage buffer at a concentration of 1 mg/mL, ready for conjugation.

This conjugation ready format makes antibodies ideal for use in many applications including: ELISAs, multiplex assays requiring matched pairs, mass cytometry, and multiplex imaging applications. Antibody use should be optimized by the end user for each application and assay.

Storage

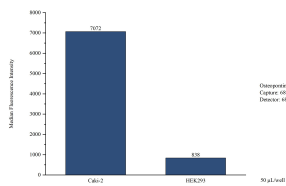
Storage:
Store at -80°C.

Storage Buffer:
PBS Only

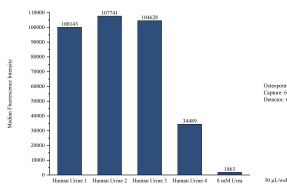
For technical support and original validation data for this product please contact:
T: 1 (888) 4PTGLAB (1-888-478-4522) (toll free in USA), or 1(312) 455-8498 (outside USA)
E: proteintech@ptglab.com
W: ptglab.com

This product is exclusively available under Proteintech Group brand and is not available to purchase from any other manufacturer.

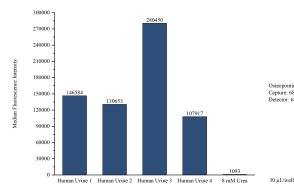
Selected Validation Data



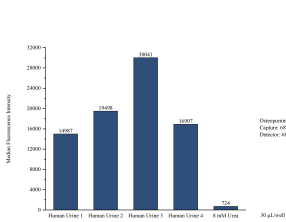
Cytometric bead array of cell line supernatant using MP50455-2, Osteopontin Monoclonal Matched Antibody Pair, PBS Only. Capture antibody: 68983-3-PBS. Detection antibody: 68983-4-PBS. Supernatant (50µL/well) from the following cell lines were assayed: Caki-2, HEK293.



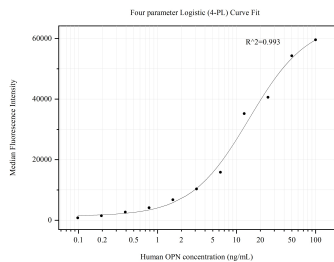
Cytometric bead array of Human urine using MP50455-2, Osteopontin Monoclonal Matched Antibody Pair, PBS Only. Capture antibody: 68983-3-PBS. Detection antibody: 68983-4-PBS. Urine of four individual healthy human donors was analyzed using MP50455-2.



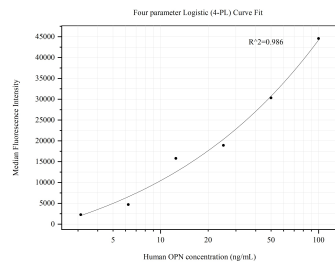
Cytometric bead array of Human urine using MP50455-3, Osteopontin Monoclonal Matched Antibody Pair, PBS Only. Capture antibody: 68983-4-PBS. Detection antibody: 68983-5-PBS. Urine of four individual healthy human donors was analyzed using MP50455-3.



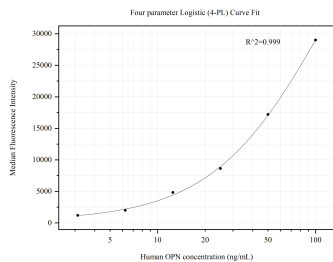
Cytometric bead array of Human urine using MP50455-4, Osteopontin Monoclonal Matched Antibody Pair, PBS Only. Capture antibody: 68983-4-PBS. Detection antibody: 68983-2-PBS. Urine of four individual healthy human donors was analyzed using MP50455-4.



Cytometric bead array standard curve of MP50455-2, OPN, SPP1 Monoclonal Matched Antibody Pair, PBS Only. Capture antibody: 68983-3-PBS. Detection antibody: 68983-4-PBS. Standard:Ag19216. Range: 0.098-100 ng/mL



Cytometric bead array standard curve of MP50455-3, OPN, SPP1 Monoclonal Matched Antibody Pair, PBS Only. Capture antibody: 68983-4-PBS. Detection antibody: 68983-5-PBS. Standard:Ag19216. Range: 3.125-100 ng/mL



Cytometric bead array standard curve of MP50455-4, OPN, SPP1 Monoclonal Matched Antibody Pair, PBS Only. Capture antibody: 68983-4-PBS. Detection antibody: 68983-2-PBS. Standard:Ag19216. Range: 3.125-100 ng/mL