

For Research Use Only

# - FITC Recombinant antibody, PBS Only



Catalog Number: 80003-1-PBS

## Basic Information

Catalog Number:

80003-1-PBS

Size:

100ug, Concentration: 1 mg/ml by Nanodrop;

Source:

Rabbit

Isotype:

IgG

GenBank Accession Number:

GeneID (NCBI):

Full Name:

Purification Method:

Protein A purification

CloneNo.:

1B2

## Applications

Tested Applications:

WB, Indirect ELISA

Species Specificity:

FITC conjugated

## Background Information

Fluorescein isothiocyanate (FITC) is a derivative of fluorescein used in wide-ranging applications. It is the original fluorescein molecule functionalized with an isothiocyanate reactive group (-N=C=S), replacing a hydrogen atom on the bottom ring of the structure. It is typically available as a mixture of isomers, fluorescein 5-isothiocyanate (5-FITC) and fluorescein 6-isothiocyanate (6-FITC). FITC is reactive towards nucleophiles including amine and sulfhydryl groups on proteins. CAS number of FITC: 27072-45-3 (mixture); 3326-32-7, 5-isomer; 18861-78-4 (6-isomer). This rabbit recombinant antibody detects the FITC only. This antibody can be coated in the plate to capture the FITC conjugated protein or antibody.

## Storage

Storage:

Store at -80°C.

Storage Buffer:

PBS Only

For technical support and original validation data for this product please contact:

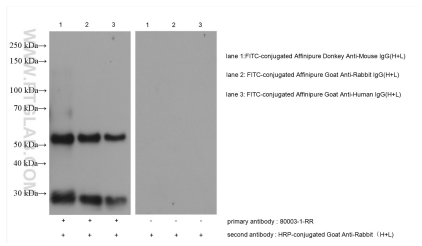
T: 1 (888) 4PTGLAB (1-888-478-4522) (toll free in USA), or 1(312) 455-8498 (outside USA)

E: [proteintech@ptglab.com](mailto:proteintech@ptglab.com)

W: [ptglab.com](http://ptglab.com)

This product is exclusively available under Proteintech Group brand and is not available to purchase from any other manufacturer.

## Selected Validation Data



FITC-conjugated secondary antibodies were subjected to SDS PAGE followed by western blot with 8003-1-RR (FITC antibody) at dilution of 1:5000 incubated at room temperature for 1.5 hours. This data was developed using the same antibody clone with 8003-1-PBS in a different storage buffer formulation.