

For Research Use Only

# FITC Recombinant antibody

Catalog Number: 80003-1-RR **1 Publications**



## Basic Information

Catalog Number: 80003-1-RR	GenBank Accession Number: GeneID (NCBI):	Purification Method: Protein A purification
Size: 100ul , Concentration: 500 ug/ml by Nanodrop;	Full Name:	CloneNo.: 1B2
Source: Rabbit		Recommended Dilutions: WB 1:2000-1:10000
Isotype: IgG		

## Applications

Tested Applications: WB, ELISA	Positive Controls: WB : FITC conjugated antibody,
Cited Applications: IP	
Species Specificity: fitc conjugated	
Cited Species: human	

## Background Information

Fluorescein isothiocyanate (FITC) is a derivative of fluorescein used in wide-ranging applications. It is the original fluorescein molecule functionalized with an isothiocyanate reactive group (-N=C=S), replacing a hydrogen atom on the bottom ring of the structure. It is typically available as a mixture of isomers, fluorescein 5-isothiocyanate (5-FITC) and fluorescein 6-isothiocyanate (6-FITC). FITC is reactive towards nucleophiles including amine and sulfhydryl groups on proteins. CAS number of FITC: 27072-45-3 (mixture); 3326-32-7, 5-isomer; 18861-78-4 (6-isomer). This rabbit recombinant antibody detects the FITC only. This antibody can be coated in the plate to capture the FITC conjugated protein or antibody.

## Notable Publications

Author	Pubmed ID	Journal	Application
Jialiang Luo	36029544	Biomed Pharmacother	IP

## Storage

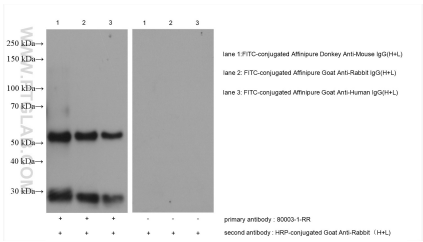
Storage:  
Store at -20°C. Stable for one year after shipment.  
Storage Buffer:  
PBS with 0.02% sodium azide and 50% glycerol pH 7.3.  
Aliquoting is unnecessary for -20°C storage

\*\*\* 20ul sizes contain 0.1% BSA

For technical support and original validation data for this product please contact:  
T: 1 (888) 4PTGLAB (1-888-478-4522) (toll free in USA), or 1(312) 455-8498 (outside USA)  
E: proteintech@ptglab.com  
W: ptglab.com

This product is exclusively available under Proteintech Group brand and is not available to purchase from any other manufacturer.

## Selected Validation Data



FITC-conjugated secondary antibodies were subjected to SDS PAGE followed by western blot with 80003-1-RR (FITC antibody) at dilution of 1:5000 incubated at room temperature for 1.5 hours.