

For Research Use Only

mouse IgG Kappa chain Recombinant antibody, PBS Only



Catalog Number: 80015-1-PBS

Basic Information

Catalog Number:

80015-1-PBS

Size:

100ug , Concentration: 1 mg/ml by Nanodrop;

Source:

Rabbit

Isotype:

IgG

GenBank Accession Number:

GeneID (NCBI):

Full Name:

Calculated MW:

155 kDa

Purification Method:

Protein A purification

CloneNo.:

3D9

Applications

Tested Applications:

WB, Indirect ELISA

Species Specificity:

human, mouse

Storage

Storage:

Store at -80°C.

Storage Buffer:

PBS Only

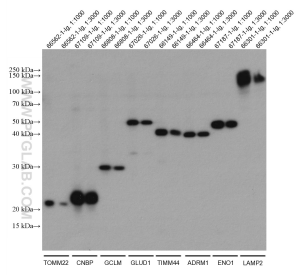
For technical support and original validation data for this product please contact:

T: 1 (888) 4PTGLAB (1-888-478-4522) (toll free in USA), or 1(312) 455-8498 (outside USA)

E: proteintech@ptglab.com
W: ptglab.com

This product is exclusively available under Proteintech Group brand and is not available to purchase from any other manufacturer.

Selected Validation Data



HEK-293 cells were subjected to SDS-PAGE followed by western blot with eight different monoclonal antibodies and subsequently detected by recombinant rabbit anti-mouse kappa chain antibody 80015-1-Ig at 1:10000 and then probed with HRP-goat anti-rabbit secondary antibody. This data was developed using the same antibody clone with 80015-1-PBS in a different storage buffer formulation.